



index

MA.DE

the dream il sogno . le rêve . der Traum . el sueño		04
the project il progetto . le projet . das Projekt . el proyecto		22
the experience le atmosfere . les lieux . Raumgestaltungen . los ambientes		34
the codes codici . codes . Artikelnummern . codigos		90

01

il sogno | le rêve | der Traum | el sueño

the dream

to link



collegare | raccorder | verbindungen | conectar









to imagine



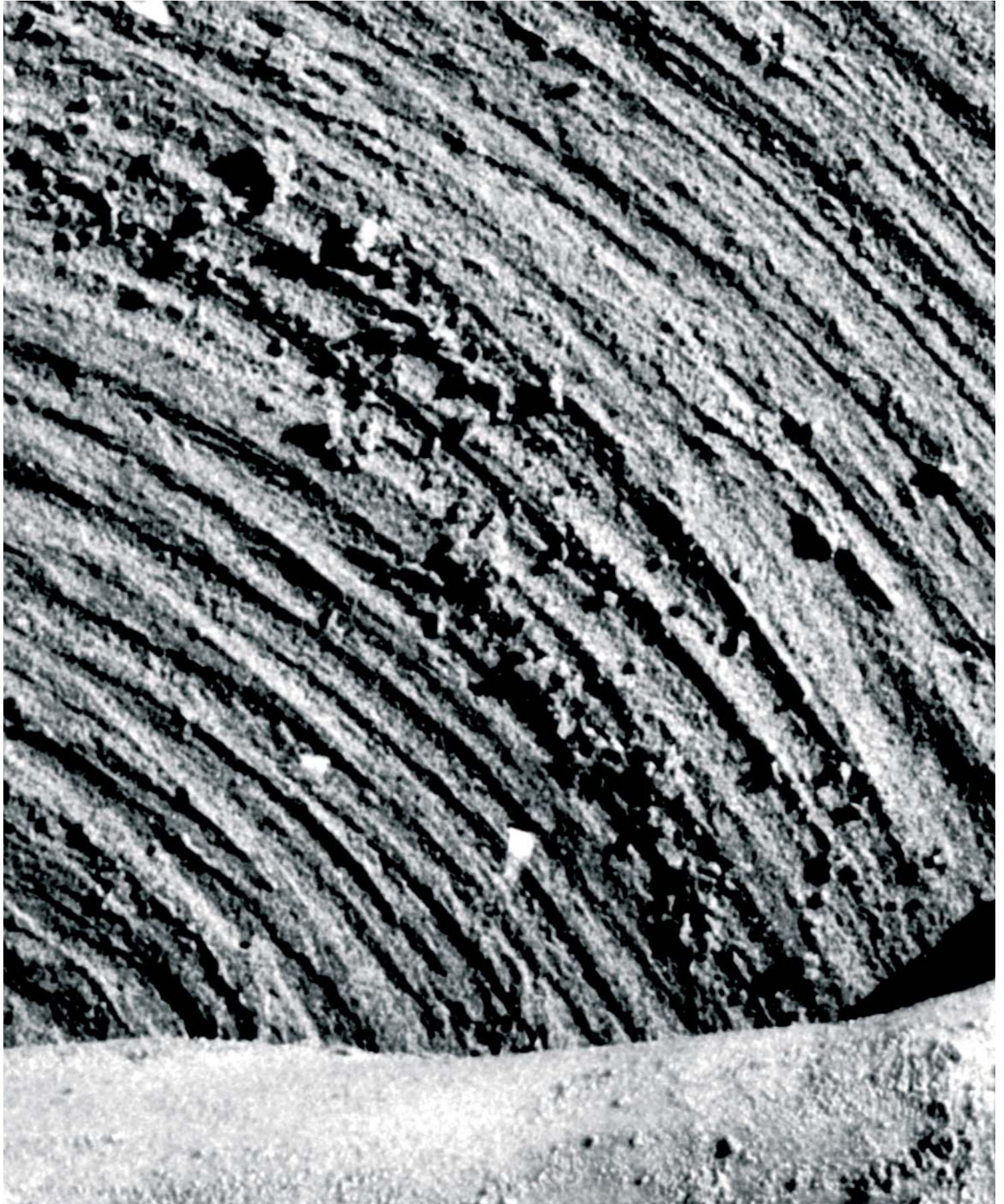




to make

fare | faire | handlungen | hacer







Qualità, sensualità, tridimensionalità, tattilità, riflessione della luce, semplicità; sono tante le caratteristiche meravigliose della nuova collezione MA.DE. Qualità di prodotto ed estetica, tridimensionalità perché le piastrelle sono lavorate non solo nella parte superficiale ma scolpite. Sensualità perché vien voglia di toccarle, tattilità perché hanno una sensorialità particolare, da provare a piedi nudi. Sono vive e riflettono la luce creando giochi di riflessi, zone più o meno luminose dell'ambiente rendendo lo spazio vivo ed accogliente. Semplicità sotto ogni aspetto, anche per la facilità della loro pulizia. MA.DE, nei formati 60x60 e sottomultipli rettificati, permette una fuga perfetta e controllabile, un gioco in più per gli appassionati di ceramica. Il materiale da pavimento può essere usato anche a rivestimento, in esterno o nelle piscine; dunque è un materiale versatile. Il nome corretto è MAterials and DEsign, cioè materiale con il quale si può disegnare un progetto con grande libertà, permettendo anche, proprio perché rettificato, di lavorare sulle superfici verticali creando suggestioni materiche a parete. Il catalogo che presentiamo racconta proprio queste sensazioni, sono sensazioni legate al nostro quotidiano, dunque speciali e molto personali. MA.DE ha anche questa qualità: è un prodotto così particolare ed immediato che ognuno ne percepisce i valori diversi ed originali.



Qualité, sensualité, tridimensionnalité, tactilité, réflexion de la lumière, simplicité; ce sont toutes les caractéristiques merveilleuses de la nouvelle collection MA.DE. Qualité de produit et esthétique, tridimensionnalité parce que les carreaux sont travaillés non seulement dans la partie superficielle mais ils sont sculptés. Sensualité parce que l'on a envie de les toucher, tactilité parce qu'ils ont une sensorialité particulière, à percevoir pieds nus. Des zones plus ou moins lumineuses de la pièce sont vives et reflètent la lumière, en créant des jeux de reflets et en rendant l'espace vivant et accueillant. Simplicité sous tous les aspects, y compris le nettoyage. MA.DE, dans les formats 60x60 et sousmultiples rectifiés, permet un jointoiment parfait et contrôlable, un jeu supplémentaire pour les passionnés de céramique. Les carreaux pour sols peuvent aussi être utilisés pour le revêtement mural, à l'extérieur ou dans les piscines; c'est donc un matériau polyvalent. Son nom exact est MAterials and DEsign, c'est-à-dire matériau avec lequel on peut dessiner un projet en toute liberté, permettant aussi, parce que les carreaux sont rectifiés, de travailler sur les surfaces verticales en créant des suggestions de la lumière. Le catalogue que nous présentons raconte justement ces sensations liées à notre quotidien, donc spéciales et très personnelles.

MA.DE a une autre qualité: c'est un produit si particulier et immédiat que chacun en perçoit les valeurs différentes et originales.

Qualität, Sinnlichkeit, Dreidimensionalität, Taktilität, Optik, Schlichtheit. Die neue MA.DE. Kollektion besitzt eine Fülle exzellenter Eigenschaften. Produktqualität mit Stil. Dreidimensionalität, da die Fliesen nicht nur eine Oberflächenbearbeitung besitzen, sondern in sich geformt sind. Sensualität, da man in Versuchung kommt, sie zu berühren. Taktilität, da sie eine besondere, sinnesanregende Wirkung besitzen und man sie gern mit bloßen Füßen fühlen würde. Diese Fliesen haben Leben in sich. Sie reflektieren das Licht und erzeugen ein Spiel aus Reflexen und unterschiedlich hellen Zonen, so dass der Raum Lebhaftigkeit und Gemütlichkeit ausstrahlt. Schlichtheit in jeder Hinsicht, auch durch die einfache Reinigung. MA.DE im Format 60x60 und in teilbaren Größen in geschliffener Ausführung ermöglicht eine saubere und gestaltungsfähige Verlegung, ein zusätzlicher Reiz für Liebhaber von Keramik. Die Bodenfliesen können auch für Wandverkleidungen, in Außenbereichen oder in Swimmingpools verwendet werden. Ein schlichtweg vielseitiges Material. Der Name setzt sich aus Materials and Design zusammen, also Material, das eine große Gestaltungsfreiheit bietet und gerade, weil es geschliffen ist, auch bei vertikalen Flächen wirkungsvolle Struktureffekte erzeugt. Der Katalog, den wir präsentieren, veranschaulicht diese Eindrücke, die mit unserem täglichen Leben verbunden sind und deshalb etwas Besonderes und sehr Persönliches besitzen. MA.DE hat auch diesen Wesenszug. Es ist ein derart besonderes und überzeugendes Produkt, dass jeder sofort die hervorstechenden und einzigartigen Eigenschaften erkennt.

Quality, sensuality, three-dimensionality, tactility, reflection of light, simplicity ... just some of the many wonderful qualities to be found in the new MA.DE. collection. Product quality and aesthetic appeal; three-dimensionality, because the tiles are not only processed on a superficial level - they are also sculpted; sensuality, because they invite the onlooker to touch them; tactility, because of their special sensorial quality (try walking on them with bare feet). These tiles are alive and reflect light, creating chiaroscuro effects within a room and making it a dynamic, welcoming ambient. These tiles are as easy as ABC under every aspect - they are even easy to clean. MA.DE, in 60x60 format and straight-edged submultiples, produces a perfect contained joint, yet another installation plus for ceramic tile aficionados. Thanks to the versatility of the material used floor tiles can also be used as wall tiles, in outdoor ambients and for swimming pools. The full name is MAterials and DEsign, i.e. material used to design a project with the utmost freedom, whose straight edges make it possible to work on vertical surfaces, thus extending the use of this material to walls as well.

The catalogue we are presenting conveys these sensations, sensations linked to our daily lives, and as such special and highly personal. MA.DE also has this quality: it is such a special, immediate product that the onlooker perceives its various original values.

Calidad, sensualidad, tridimensionalidad, tacto agradable, reflexión de la luz, sencillez: son muchas las estupendas características de la nueva colección MA.DE. Calidad del producto y estética, y tridimensionalidad, porque los azulejos no están simplemente trabajados superficialmente, sino esculpidos. Sensualidad porque apetece tocarlos; tacto agradable porque suscitan una percepción particular que vale la pena experimentar con los pies descalzos. Están llenos de vida y espejan la luz creando juegos de reflejos, zonas más o menos luminosas del ambiente convirtiendo el espacio en un ámbito cálido y acogedor. Sencillez desde todos los puntos de vista, incluida la facilidad de limpieza. MA.DE, en los formatos 60x60 y submúltiplos rectificadas, permite una junta perfecta y controlable, un juego más para los aficionados a la cerámica.

El material para pavimentos también puede emplearse para revestimientos, en exteriores o piscinas; estamos hablando, por tanto, de un material versátil. Su nombre correcto es "MAterials and Design", o sea, un material que ofrece la posibilidad de proyectar con toda libertad, permitiendo incluso, precisamente por tratarse de superficies rectificadas, trabajar sobre superficies verticales creando sugestivos efectos materiales en pared. El catálogo que presentamos ilustra justamente estas impresiones; impresiones vinculadas a nuestro vivir cotidiano y, por consiguiente, especiales y muy personales.

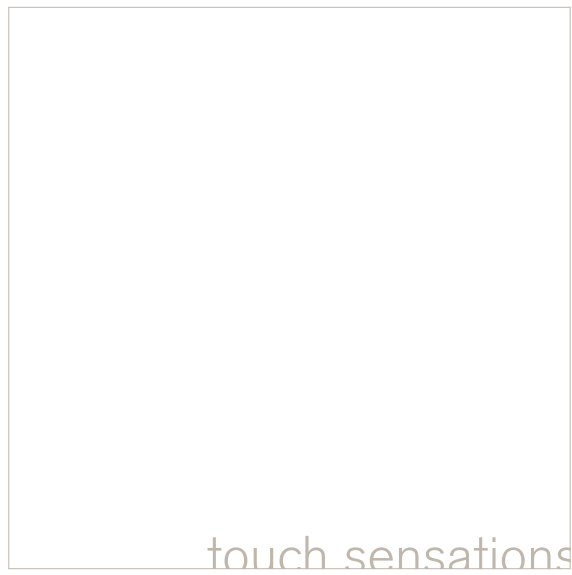
MA.DE, además, posee otra cualidad: es un producto tan peculiar e inmediato que todo el mundo capta sus virtudes diferentes y originales.

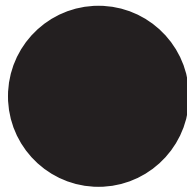
02

il progetto | le projet | das Projekt | el proyecto

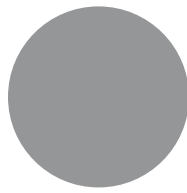
the project







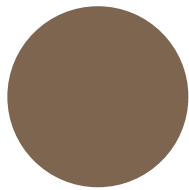
excelsior



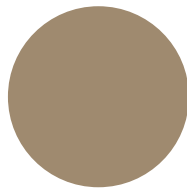
orlov



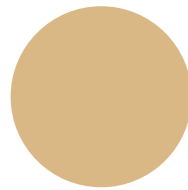
victoria



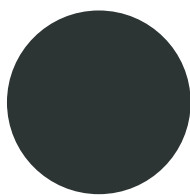
cocos café



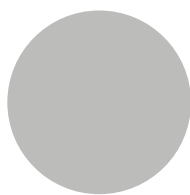
cocos tortora



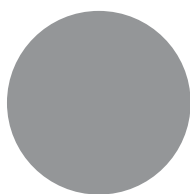
cocos beige



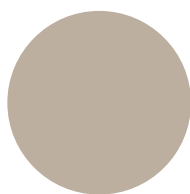
uni nero



uni grigio



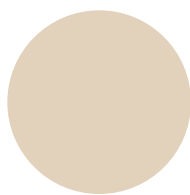
uni metal



uni tortora

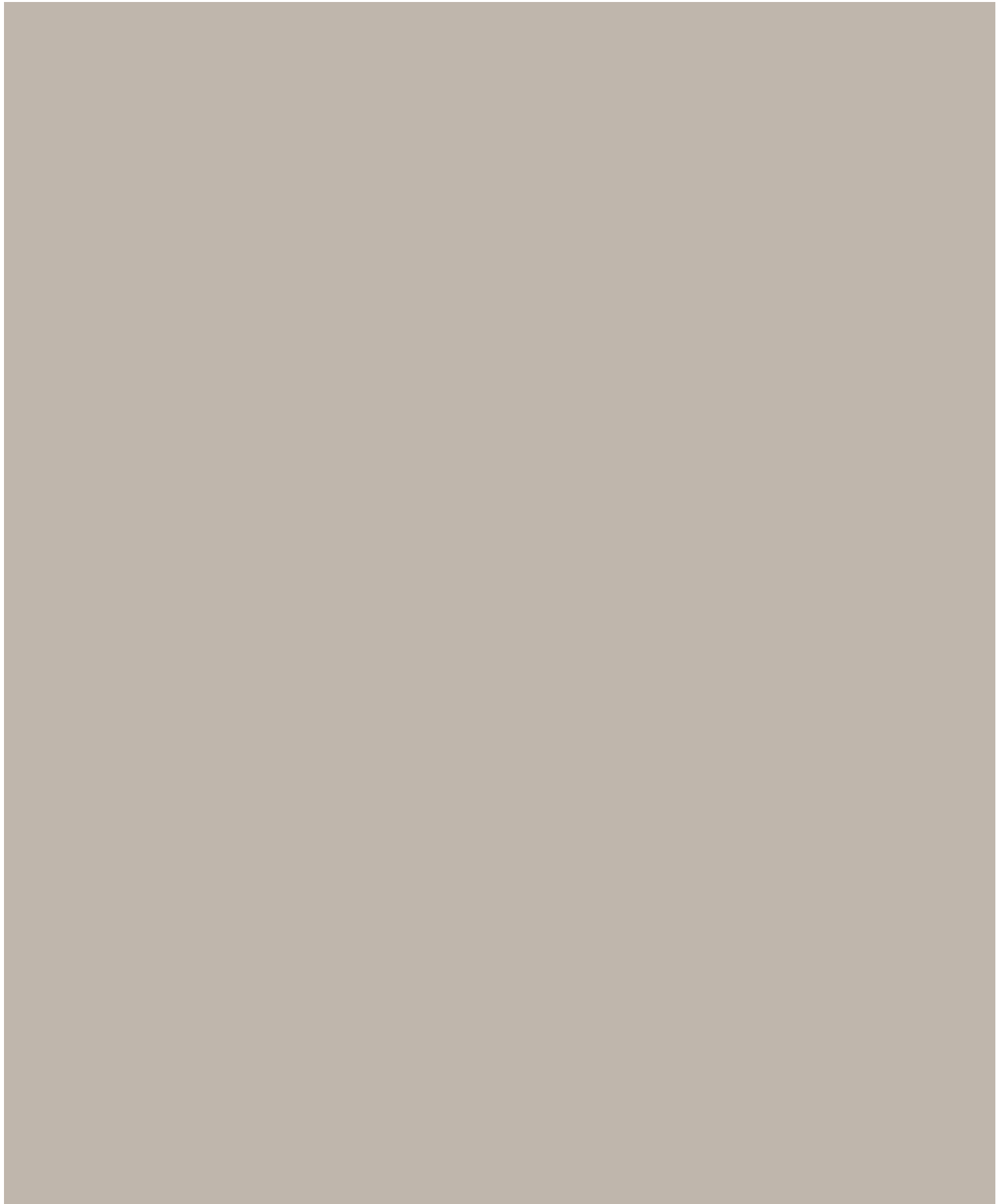


uni bianco



uni beige

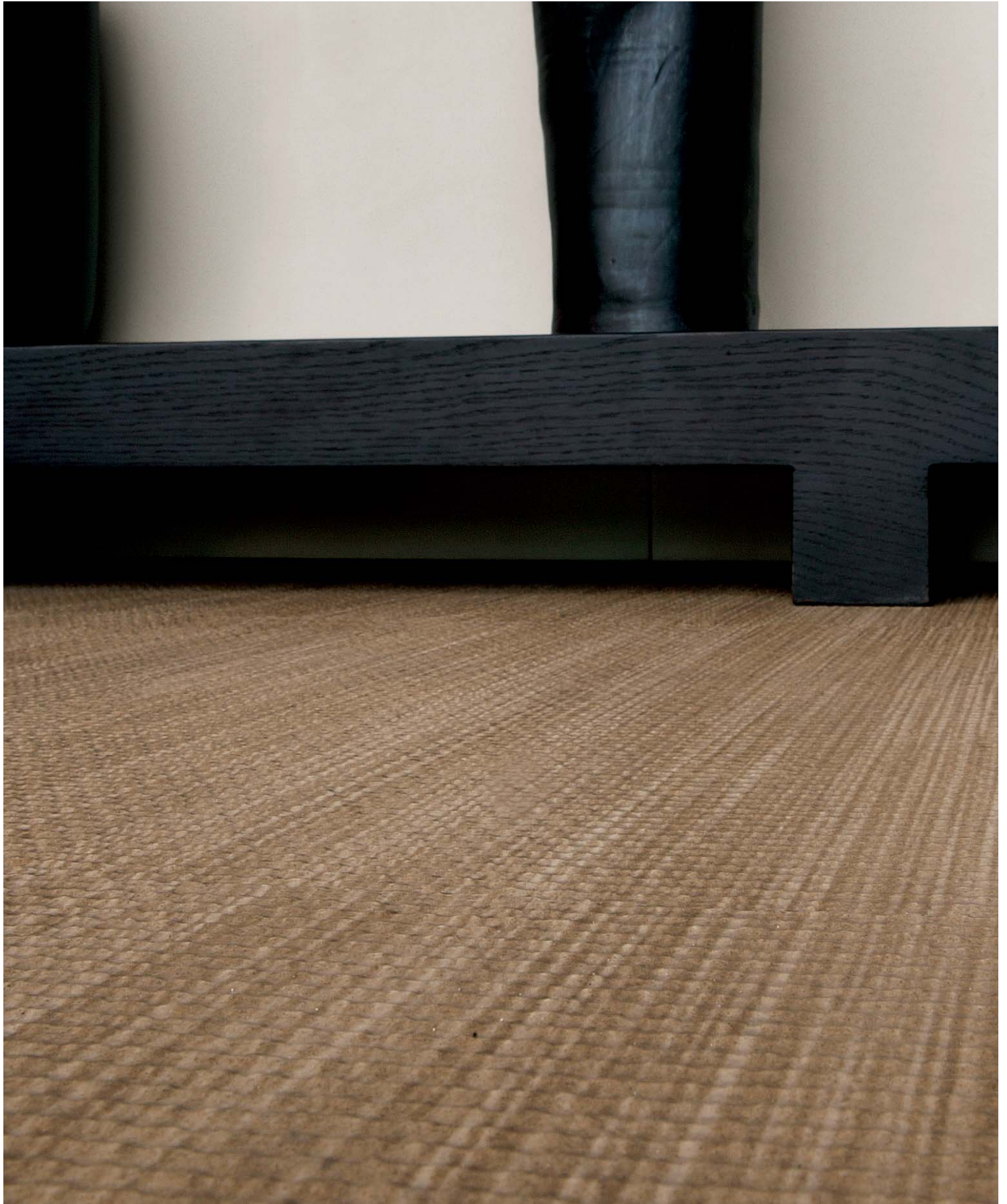


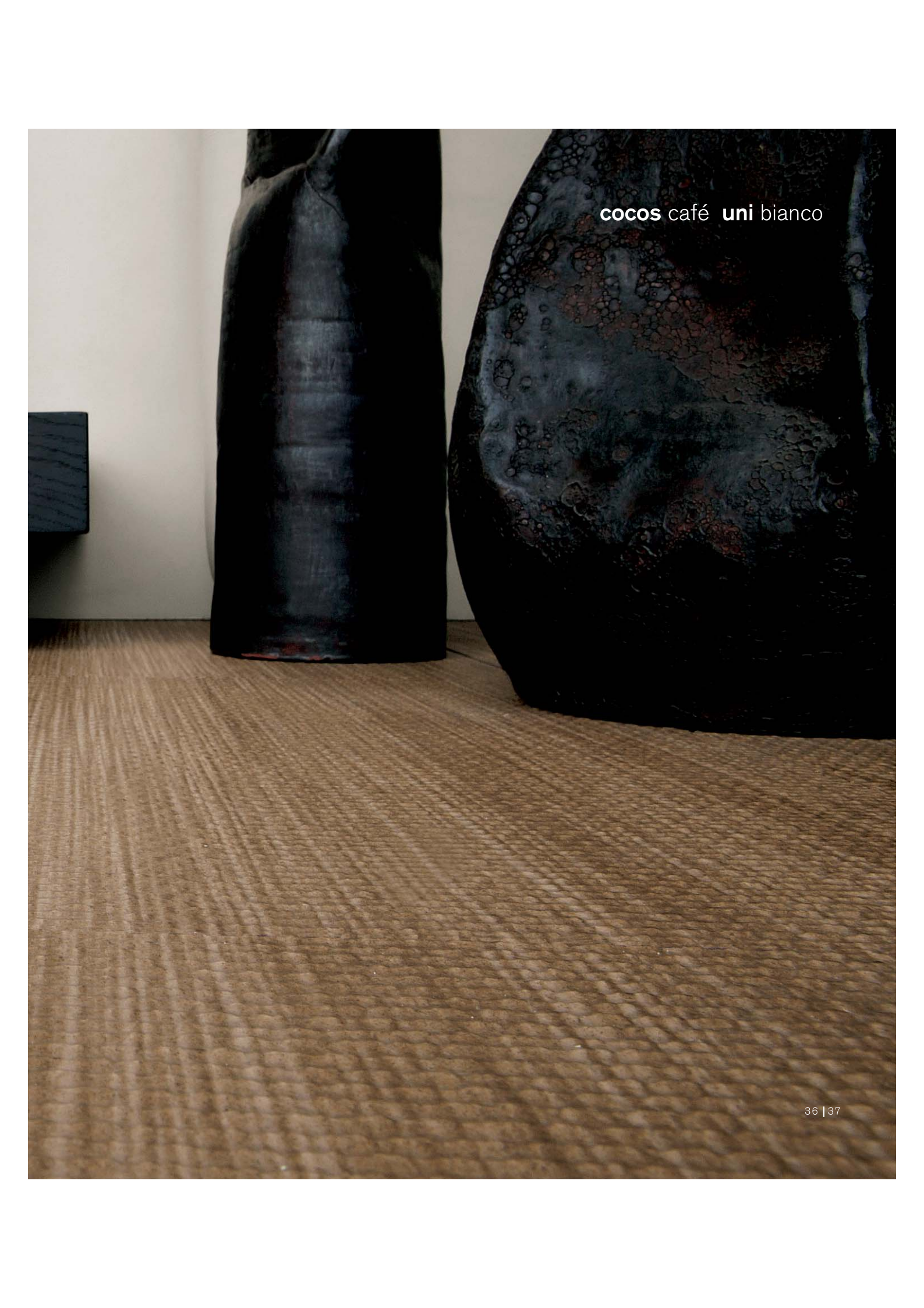


03

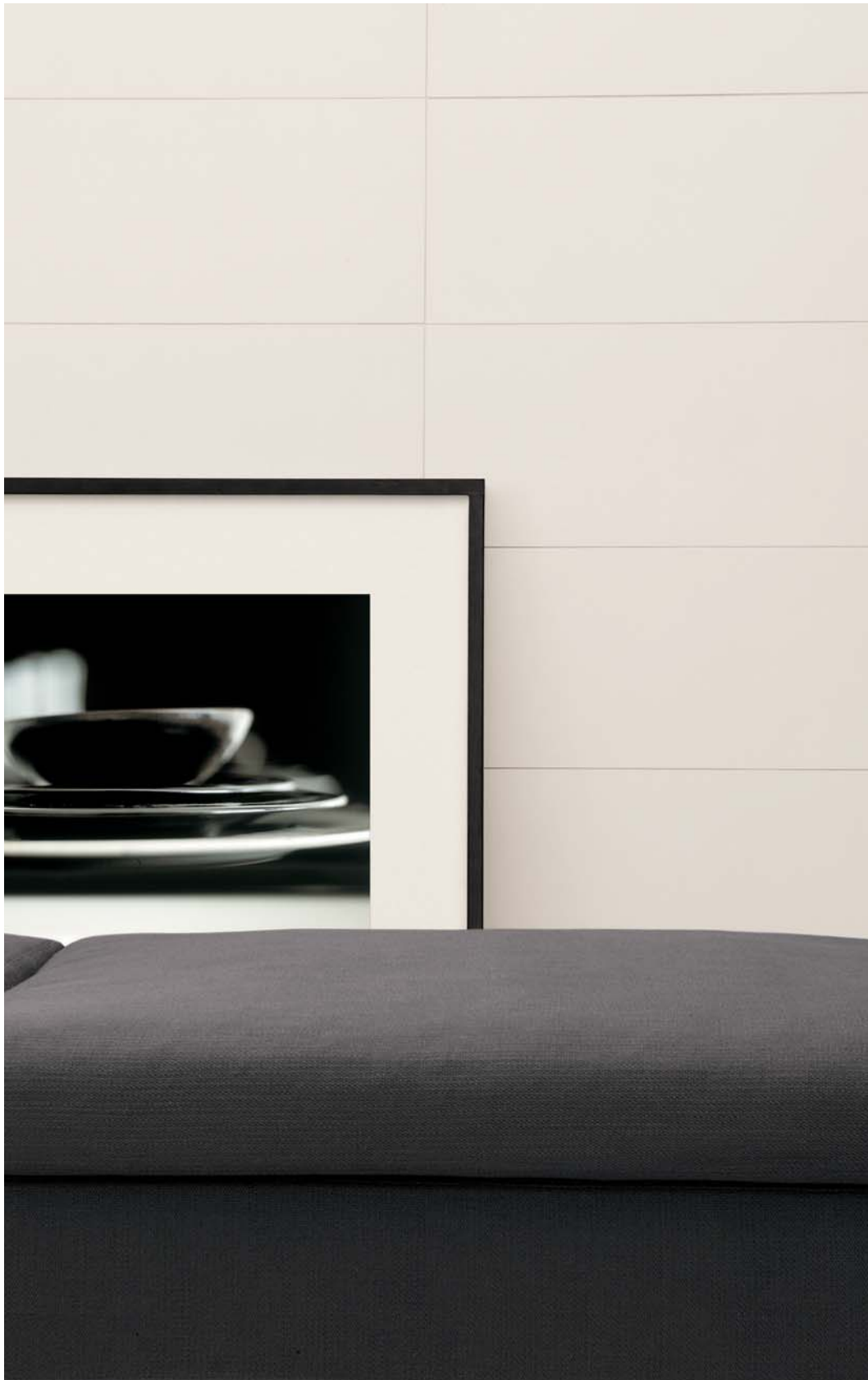
le atmosfere | les lieux | Raumbestaltungen | los ambientes

the experience



The image shows two large, dark, textured objects standing on a light brown, textured floor. The object on the left is a tall, cylindrical form with a smooth, dark surface. The object on the right is a large, rounded, dome-like shape with a highly textured, cracked, and mottled surface in shades of dark blue, black, and brown. The background is a plain, light-colored wall. The text 'cocos café uni bianco' is overlaid in the upper right quadrant of the image.

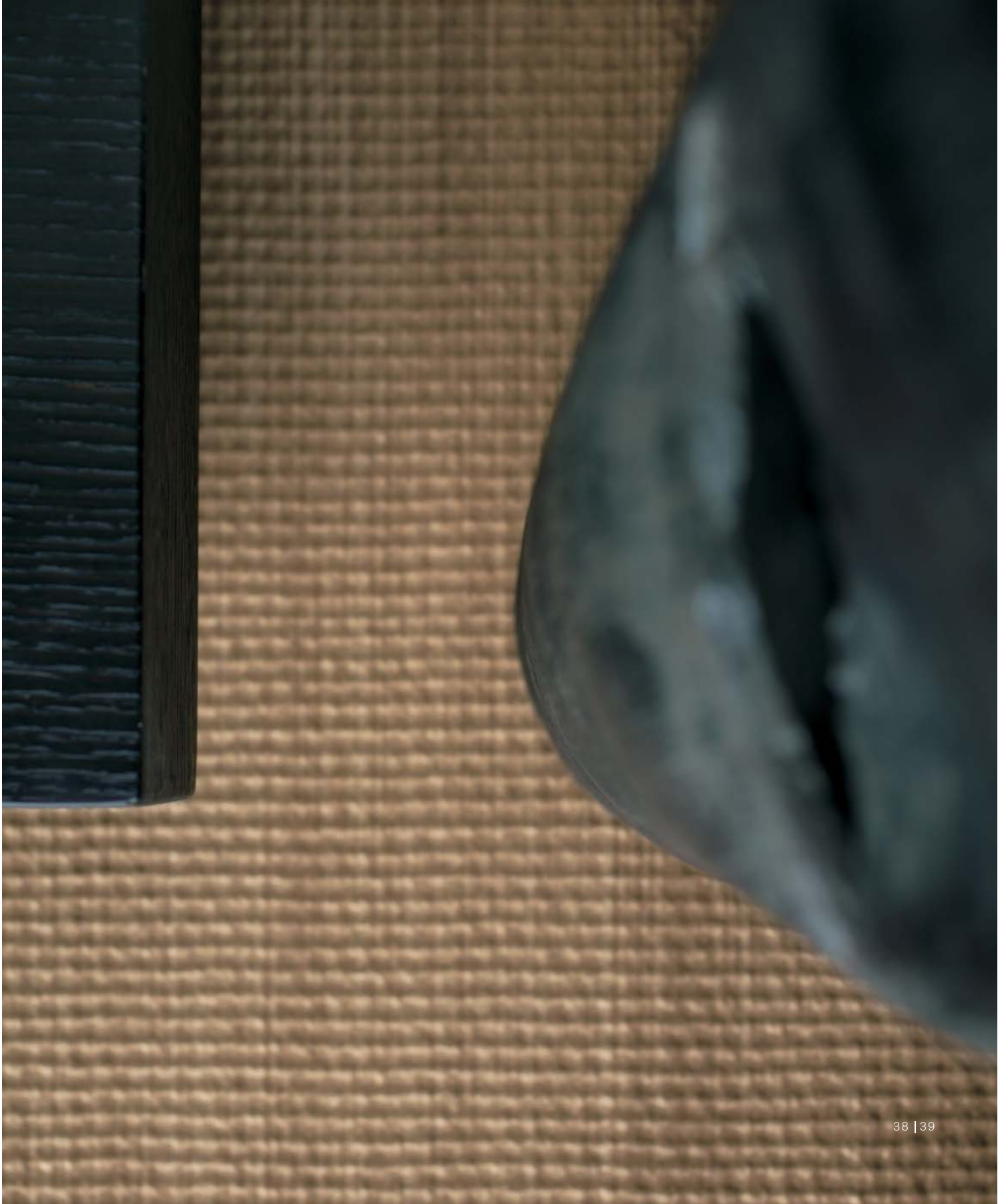
cocos café uni bianco



01

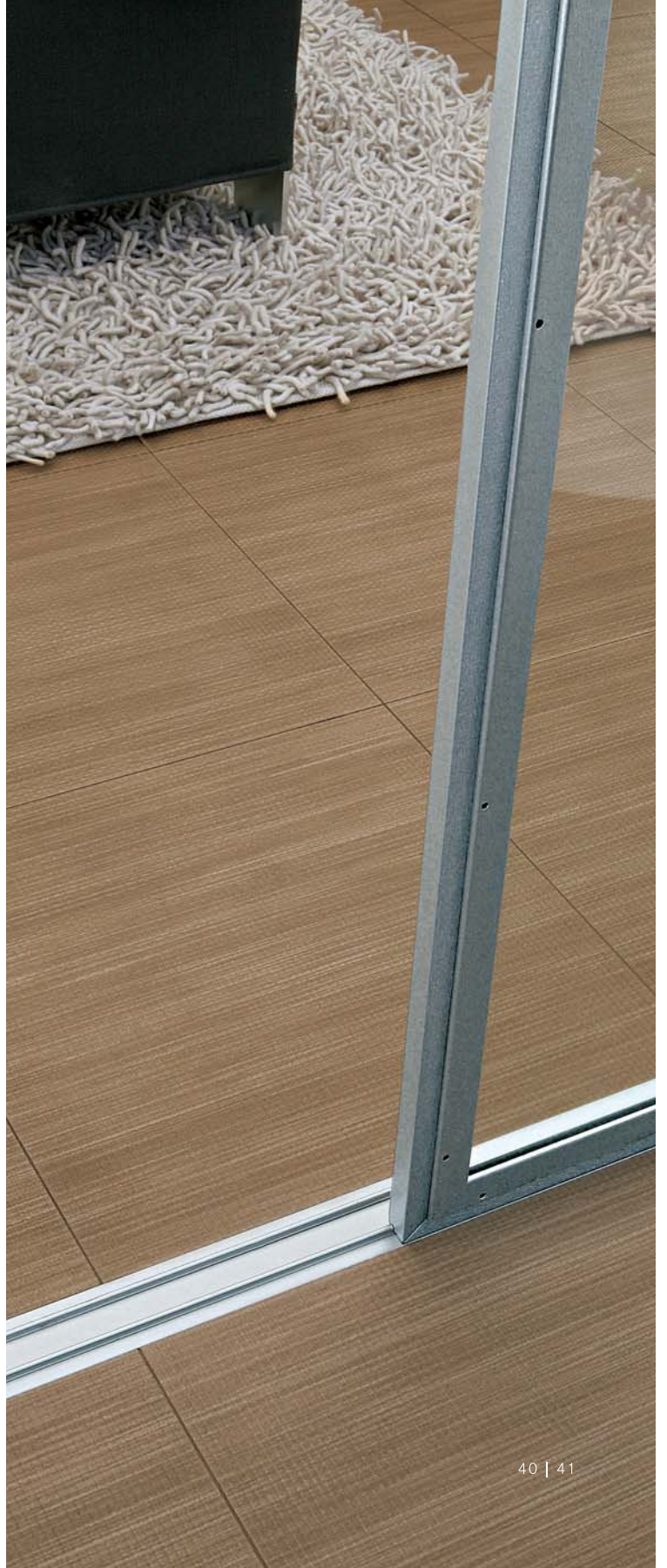
02

01. rivestimento uni bianco 60x30
02. pavimento cocos café 60x60

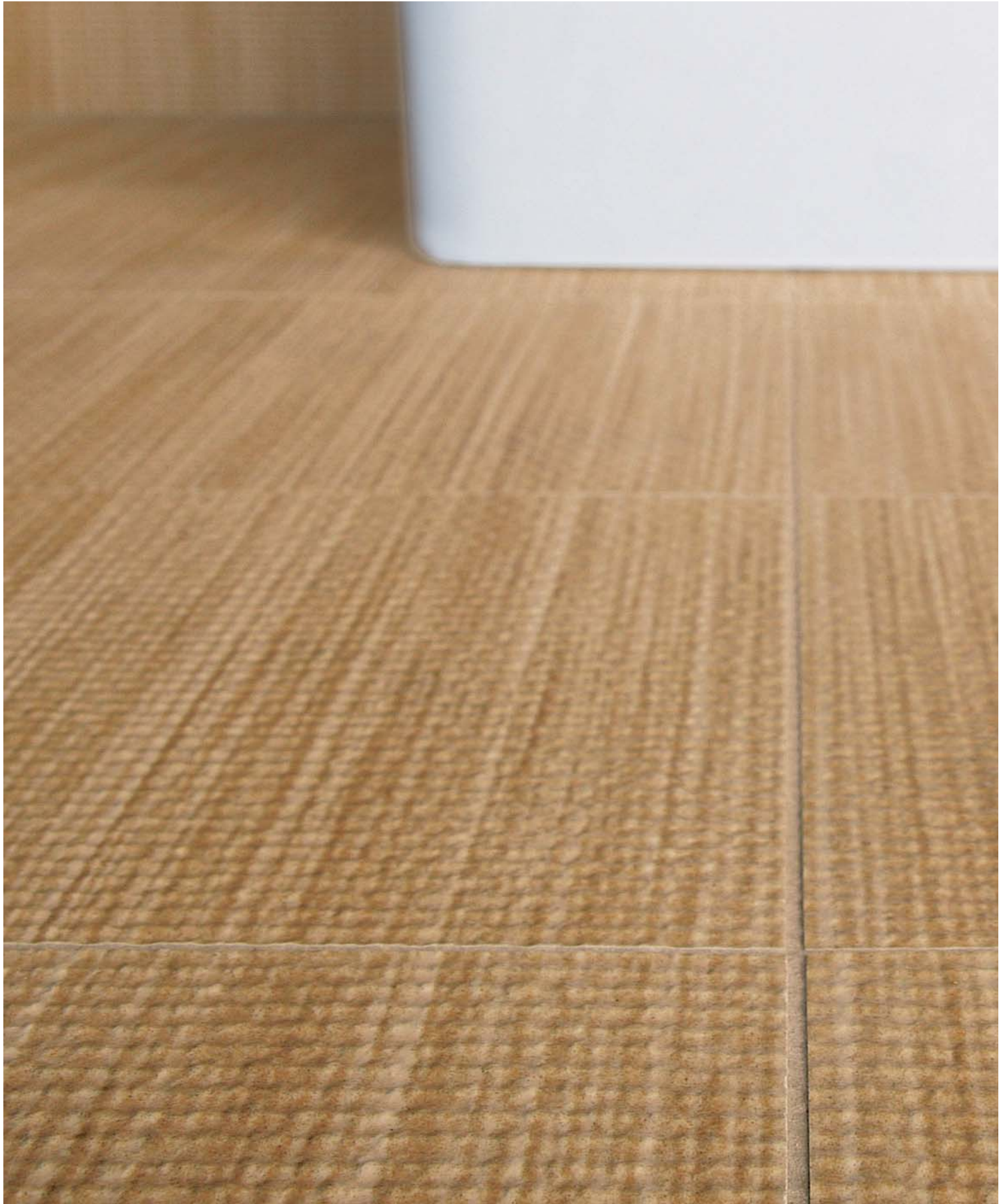




04



03. pavimento cocos café 60x60
04. pavimento cocos café 60x60

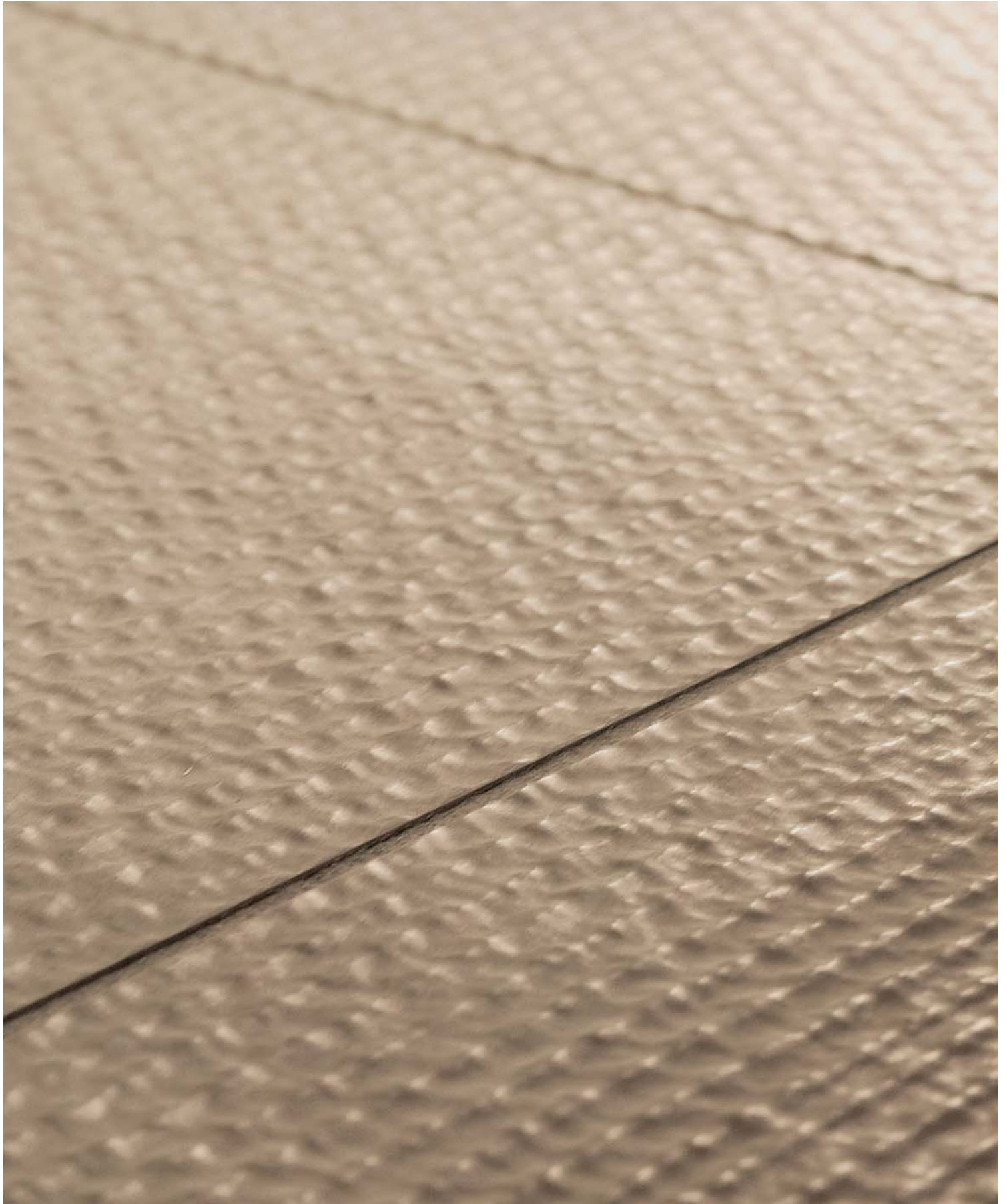


cocos beige



05. pavimento cocos beige 60x30
rivestimento cocos beige 60x30





cocos tortora **uni** nero

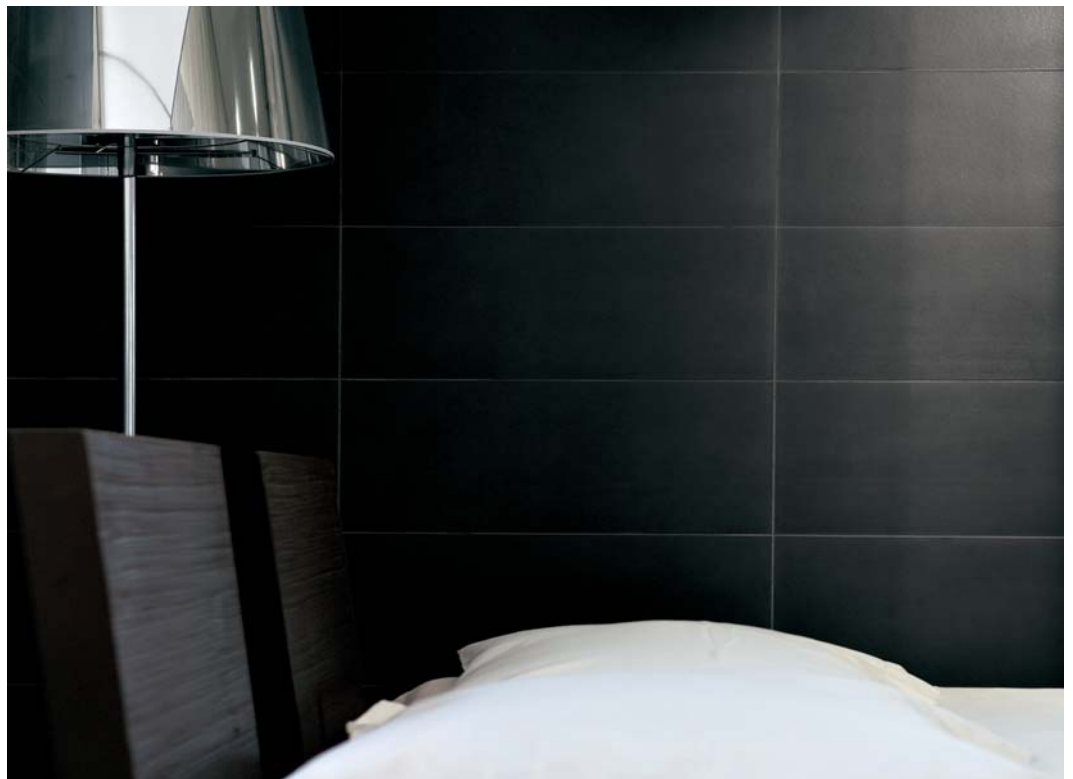


06. pavimento cocos tortora 60x60





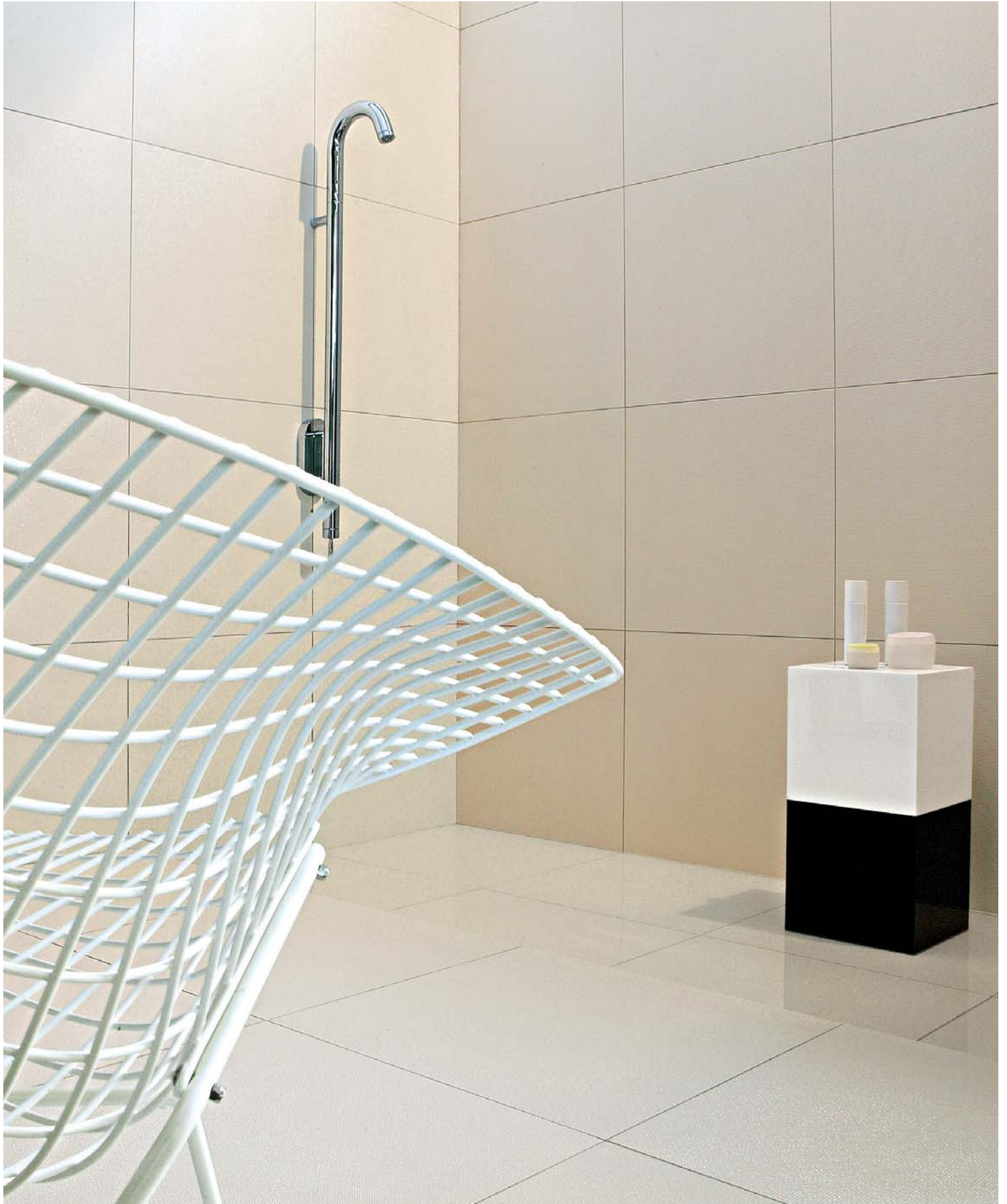
08

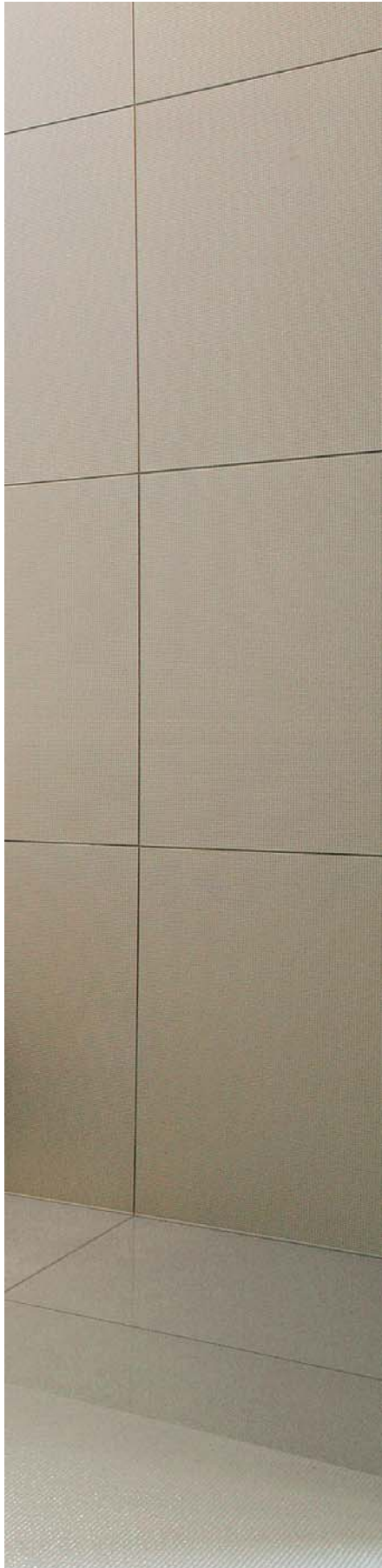


07. pavimento cocos tortora 60x60
rivestimento uni nero 60x30
08. rivestimento uni nero 60x30



victoria





09

10



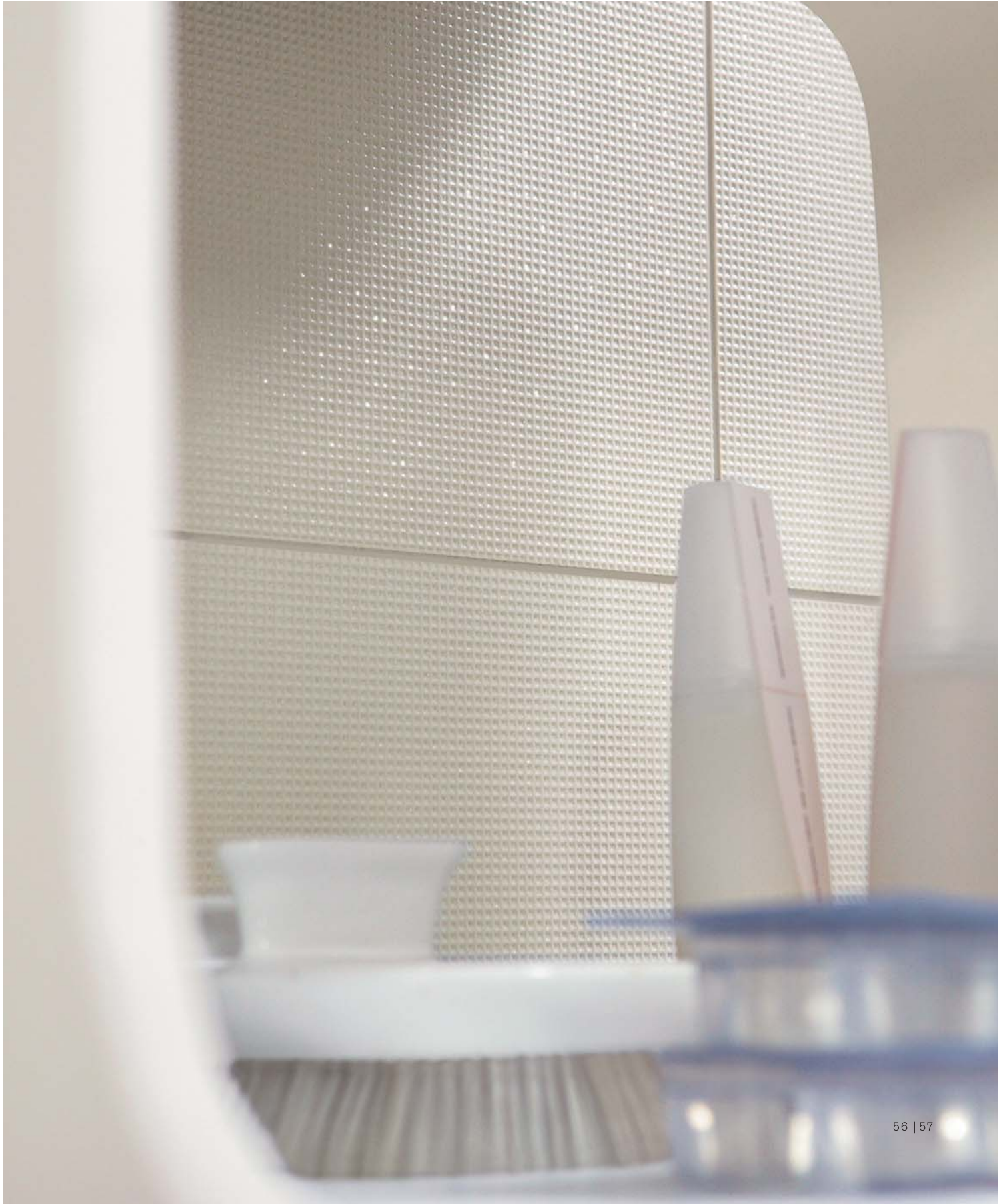
09. pavimento victoria 60x60
rivestimento victoria 60x60
10. rivestimento victoria 60x60



11

12

11. rivestimento victoria 60x60
12. rivestimento victoria 60x60





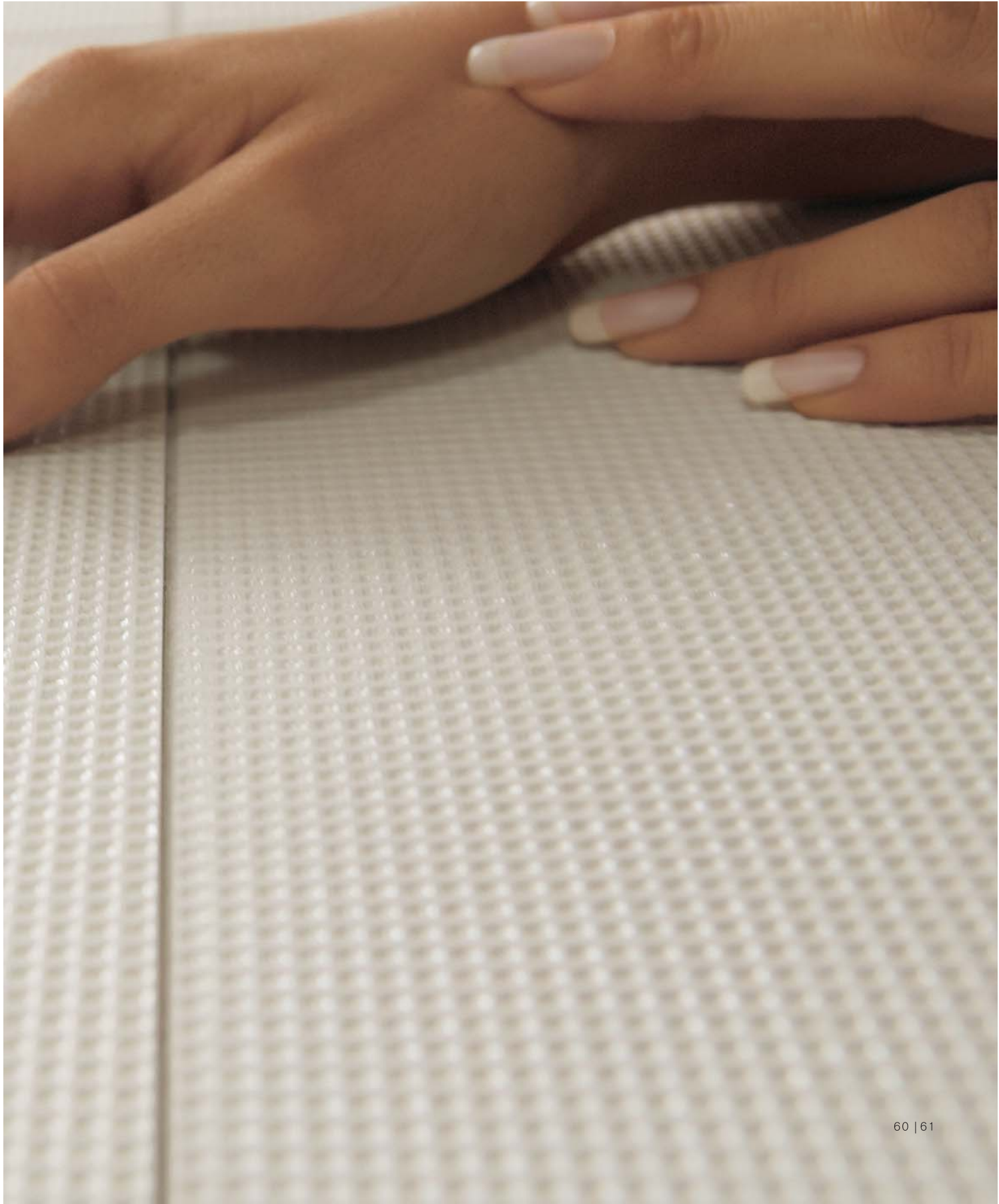
13

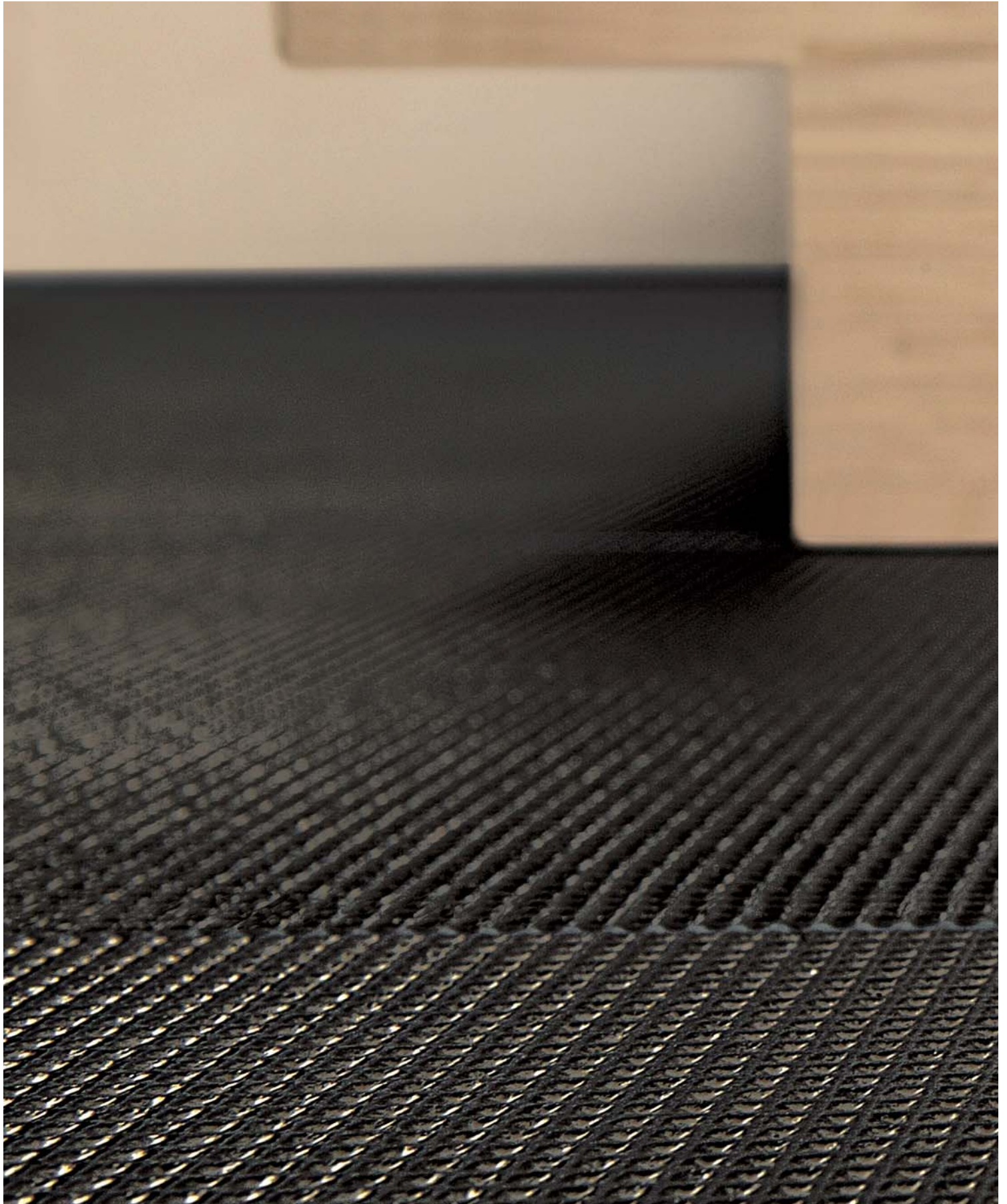
14



13. pavimento victoria 60x60
14. pavimento victoria 60x60







uni beige excelsior



15

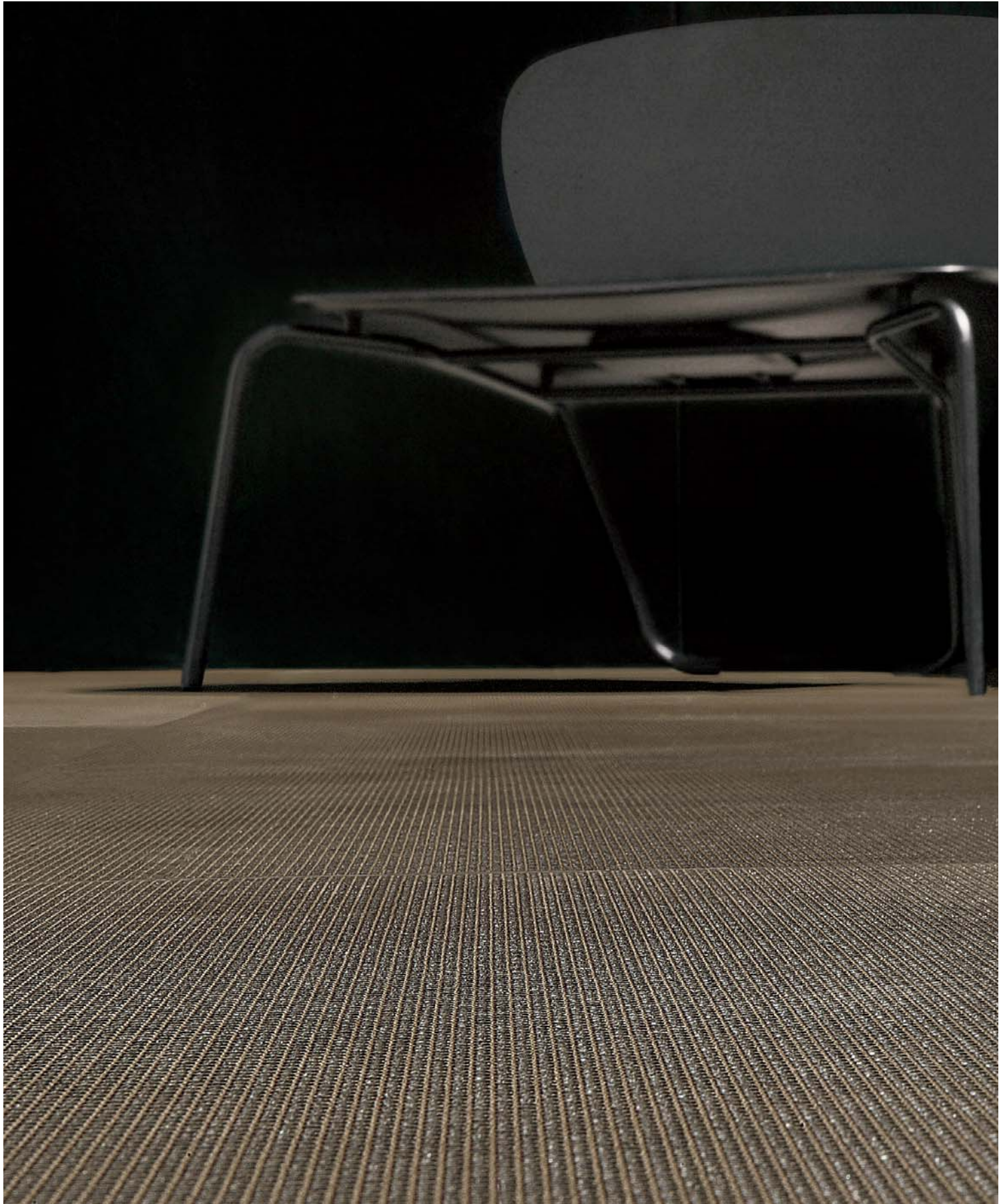
16

- 15. pavimento excelsior 60x30
- 16. pavimento excelsior 60x30
rivestimento uni beige 60x60









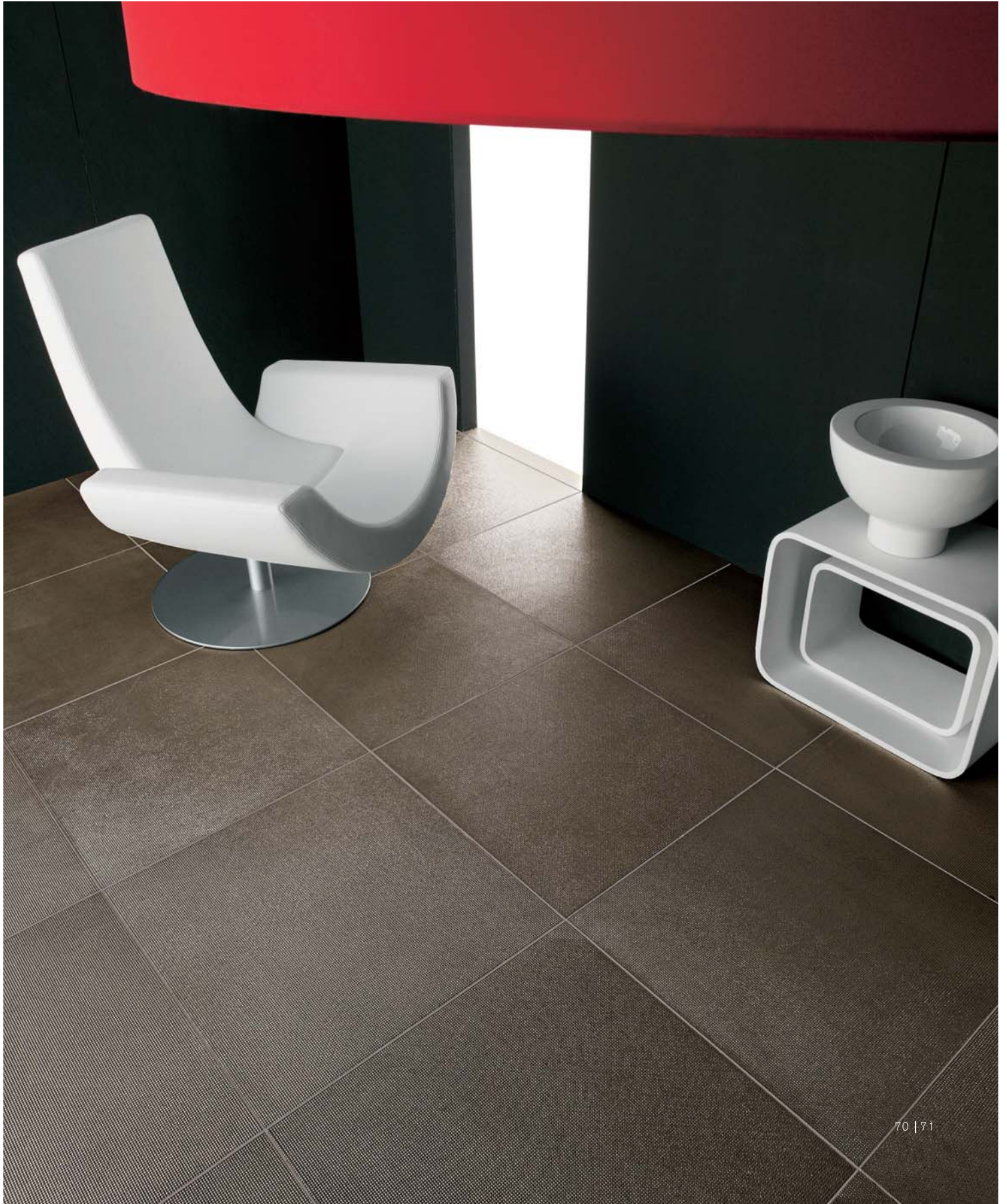
orlov



18

19

18. pavimento orlov 60x60
19. pavimento orlov 60x60





20. pavimento orlov 60x60





uni metal



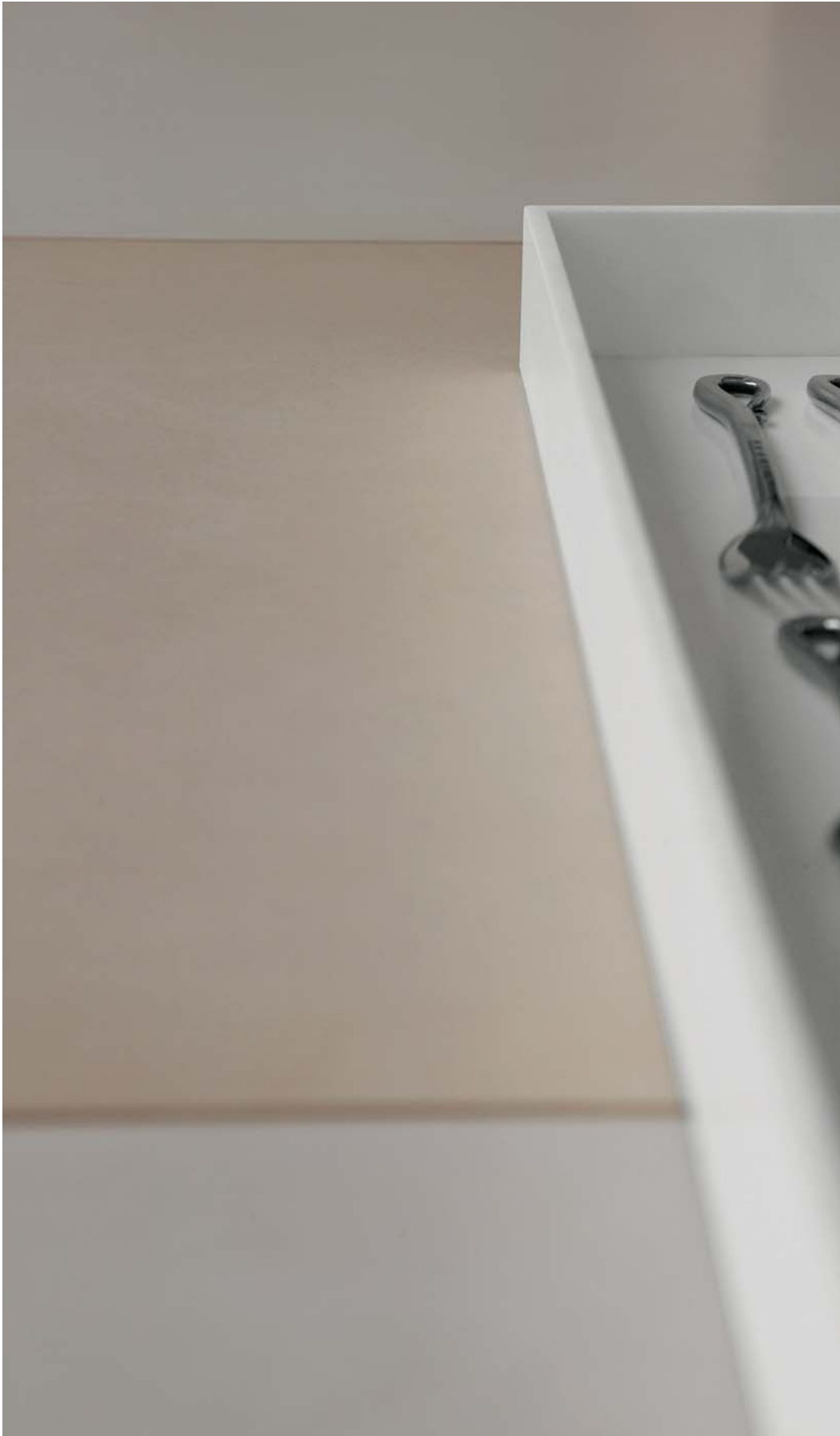
22

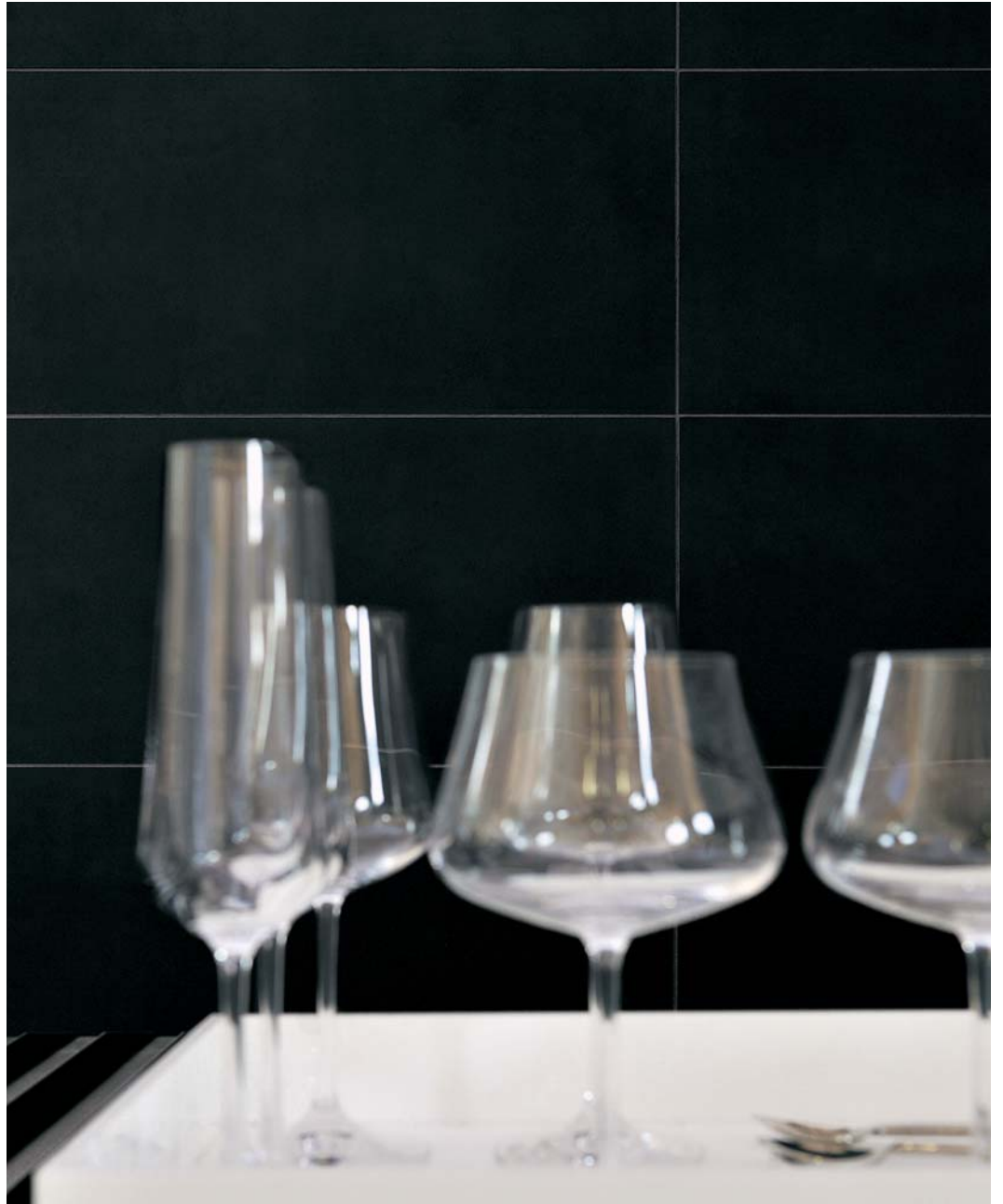


21. pavimento uni metal 60x60
22. pavimento uni metal 60x60



uni tortora **uni** grigio **uni** nero





24

23. damier uni tortora | uni grigio 60x60
24. rivestimento uni nero 60x30



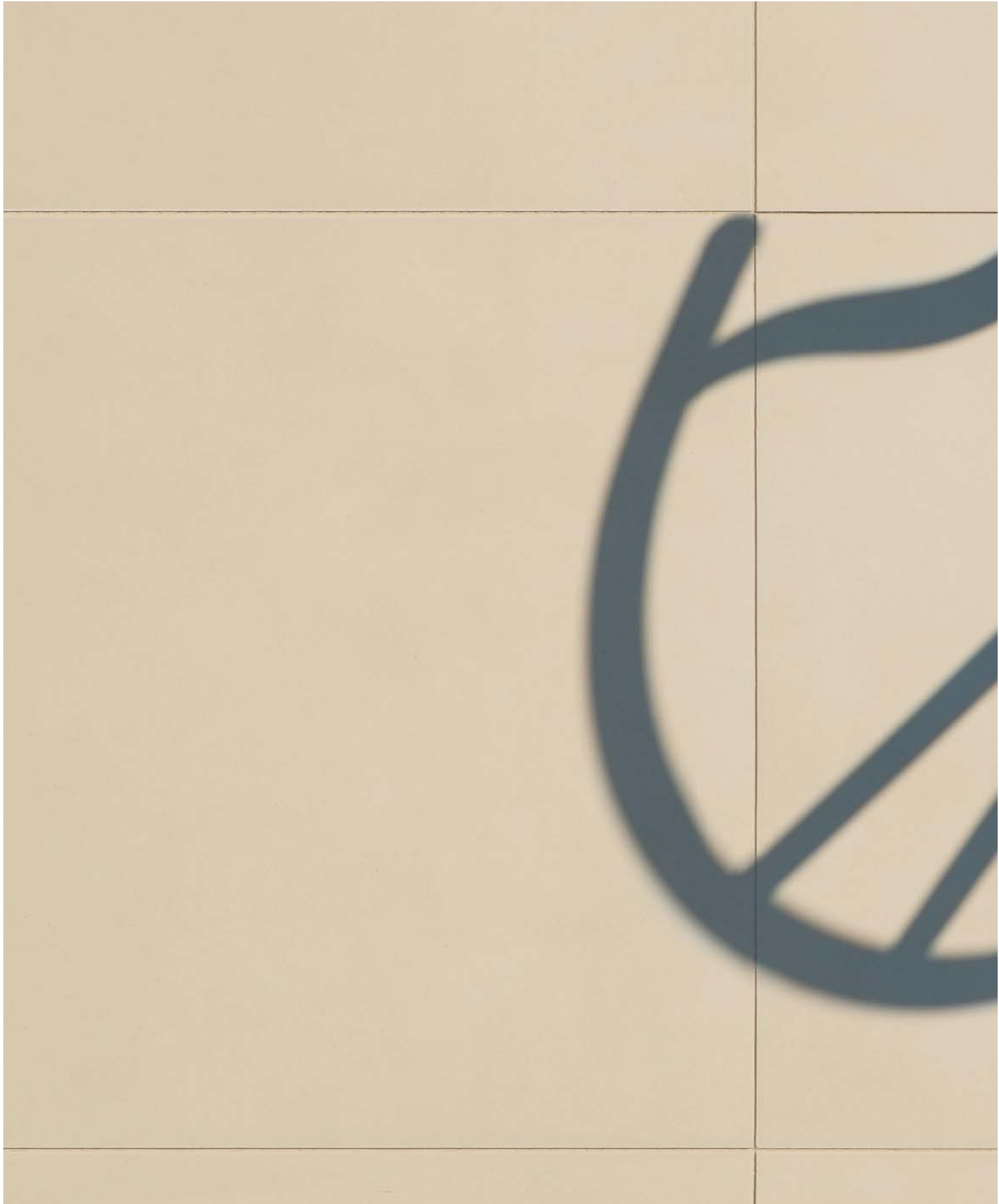
25

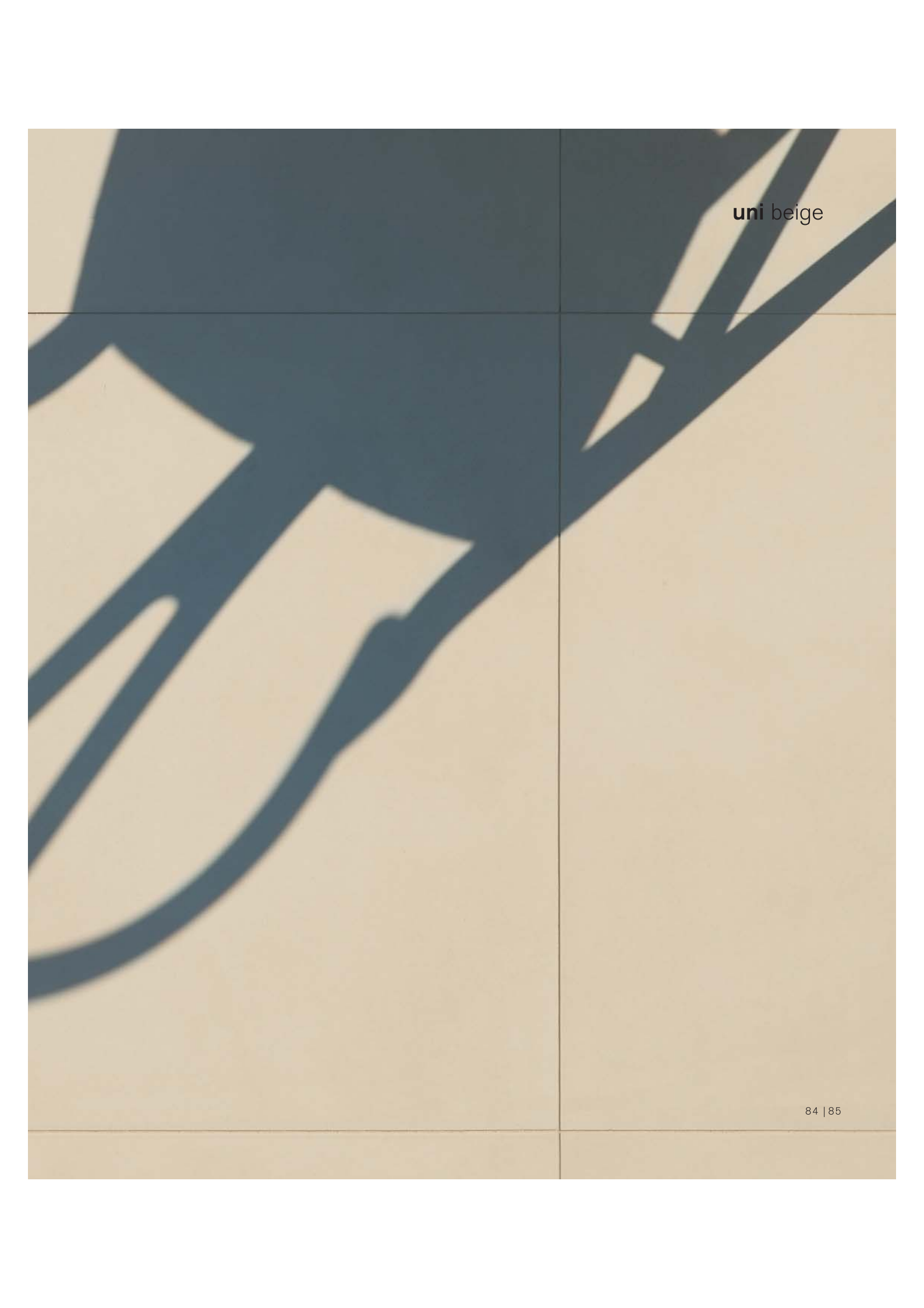
26

25. rivestimento uni nero 60x30

26. damier uni tortora | uni grigio 60x60
rivestimento uni nero 60x30





The image is an abstract graphic design. It features a light beige background with a dark blue, almost black, organic shape that resembles a stylized animal or a large shadow. This shape is composed of several thick, curved lines that intersect and flow across the page. A thin, dark grid is overlaid on the entire composition, consisting of one vertical line and one horizontal line that intersect in the upper right quadrant. The text 'uni beige' is positioned in the upper right area, within the grid's intersection. The overall aesthetic is minimalist and modern.

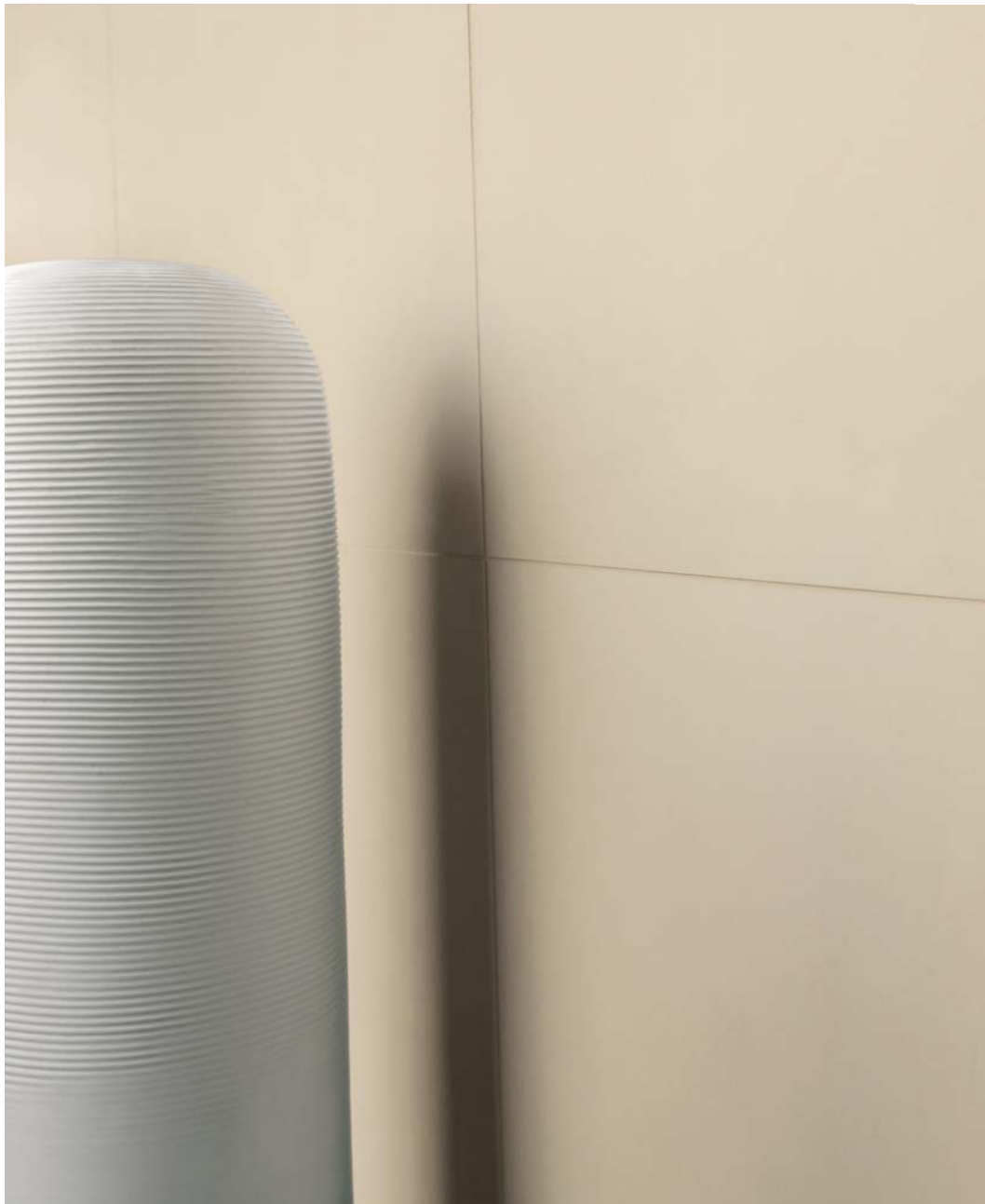
uni beige

27



27. pavimento uni beige 60x60





28

29

28. rivestimento uni beige 60x60
29. rivestimento uni beige 60x60

04 |

the codes

MA.DE

victoria

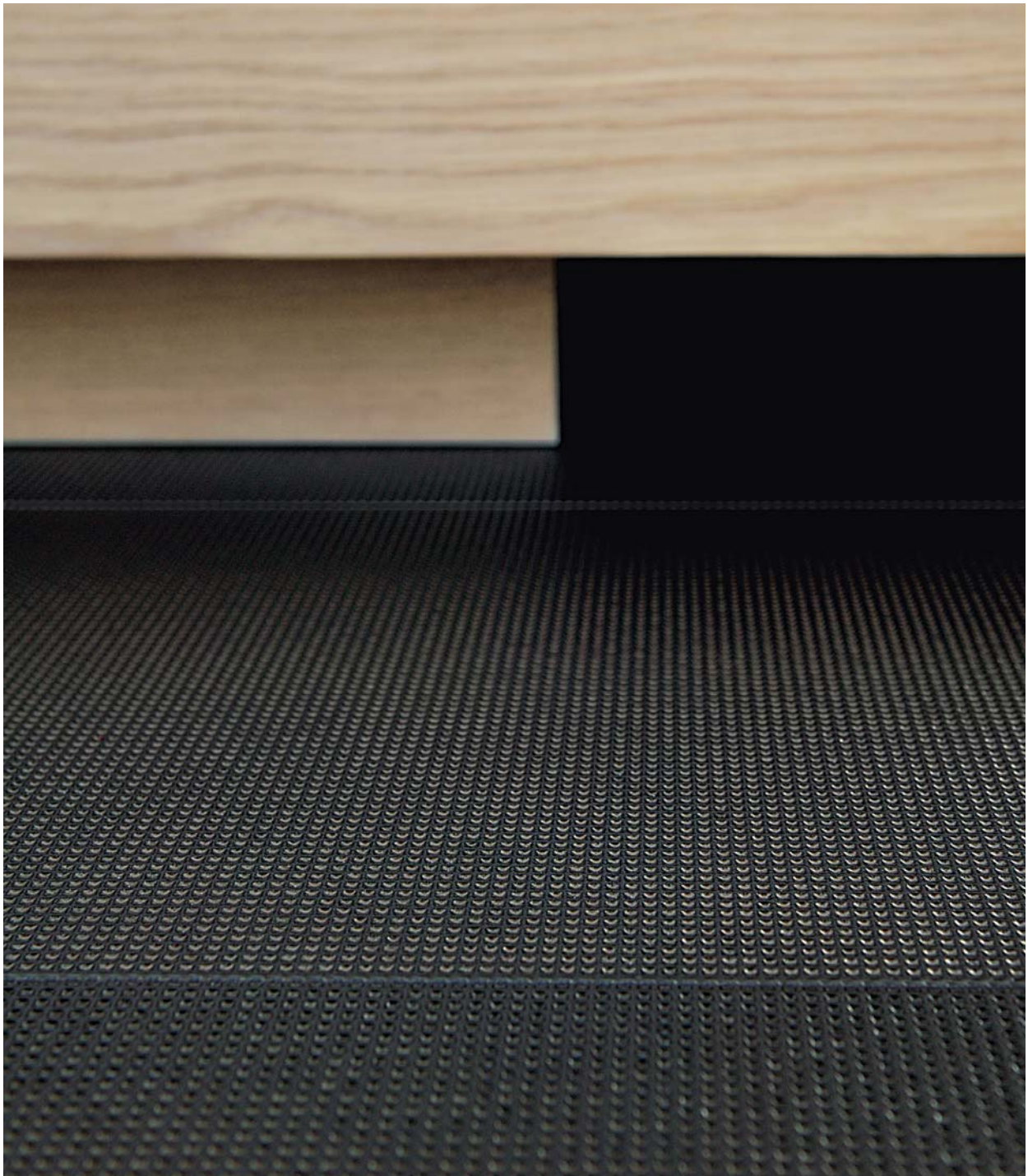


orlov

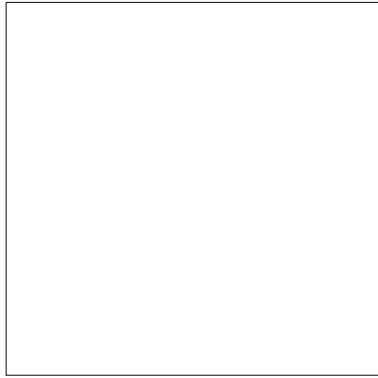


MA.DE

excelsior



formati | nominal sizes | formats | formate | formatos



60x60 | 24"x24"



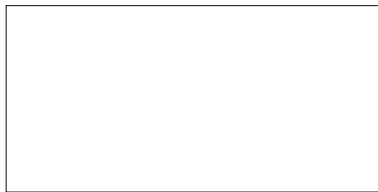
- 866001** . victoria . Pei IV - GLA R9
- 866002** . orlov . Pei IV - GLA R10
- 866003** . excelsior . Pei IV - GLA R10



1,5x60



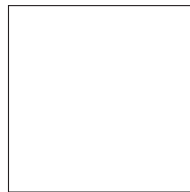
- 861501** . list. victoria
- 861502** . list. orlov
- 861503** . list. excelsior



60x30 | 24"x12"



- 863001** . victoria . Pei IV - GLA R9
- 863002** . orlov . Pei IV - GLA R10
- 863003** . excelsior . Pei IV - GLA R10



30x30 | 12"x12"



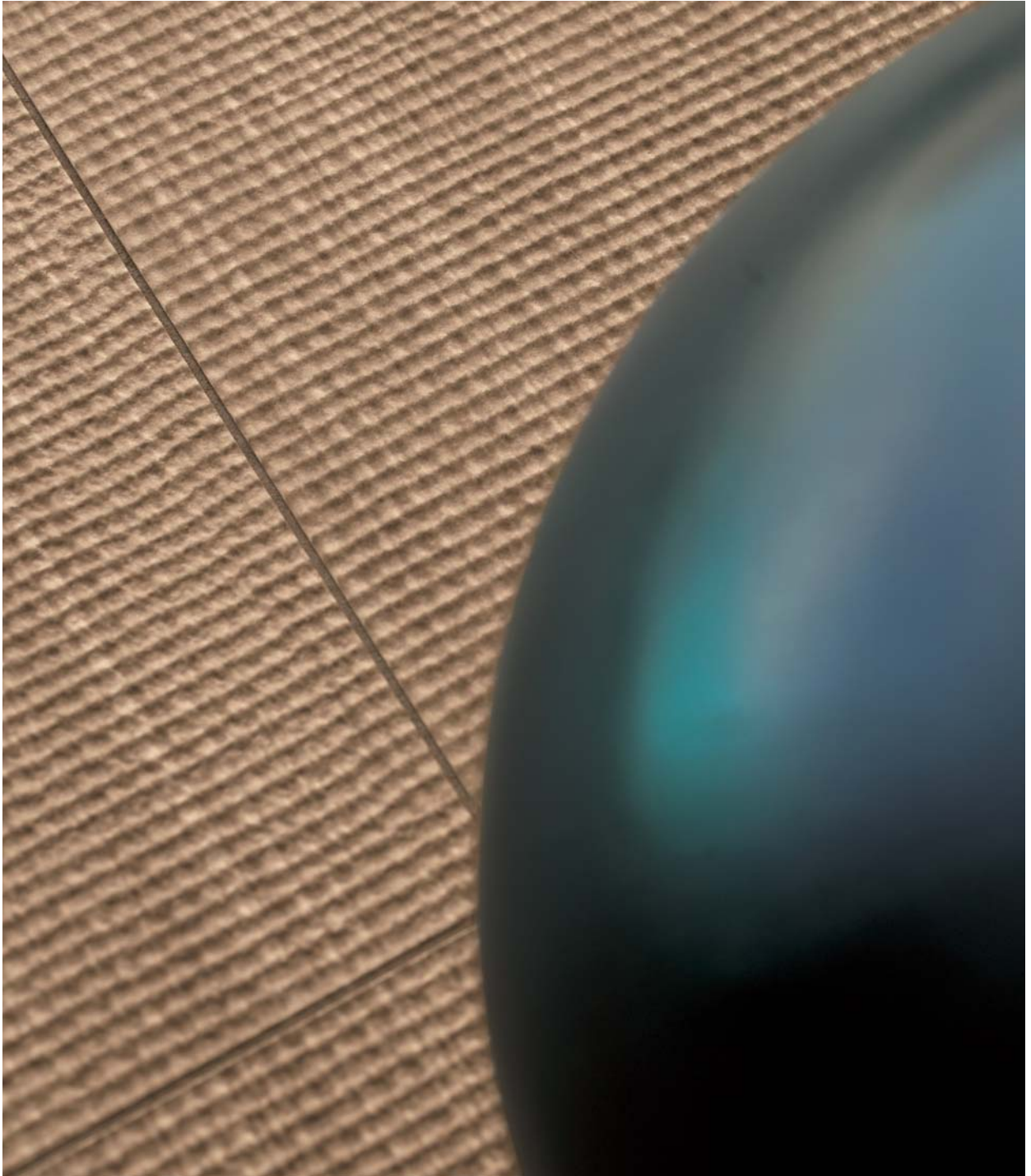
- 860001** . victoria . Pei IV - GLA R9
- 860002** . orlov . Pei IV - GLA R10
- 860003** . excelsior . Pei IV - GLA R10

tutti i formati sono squadriati

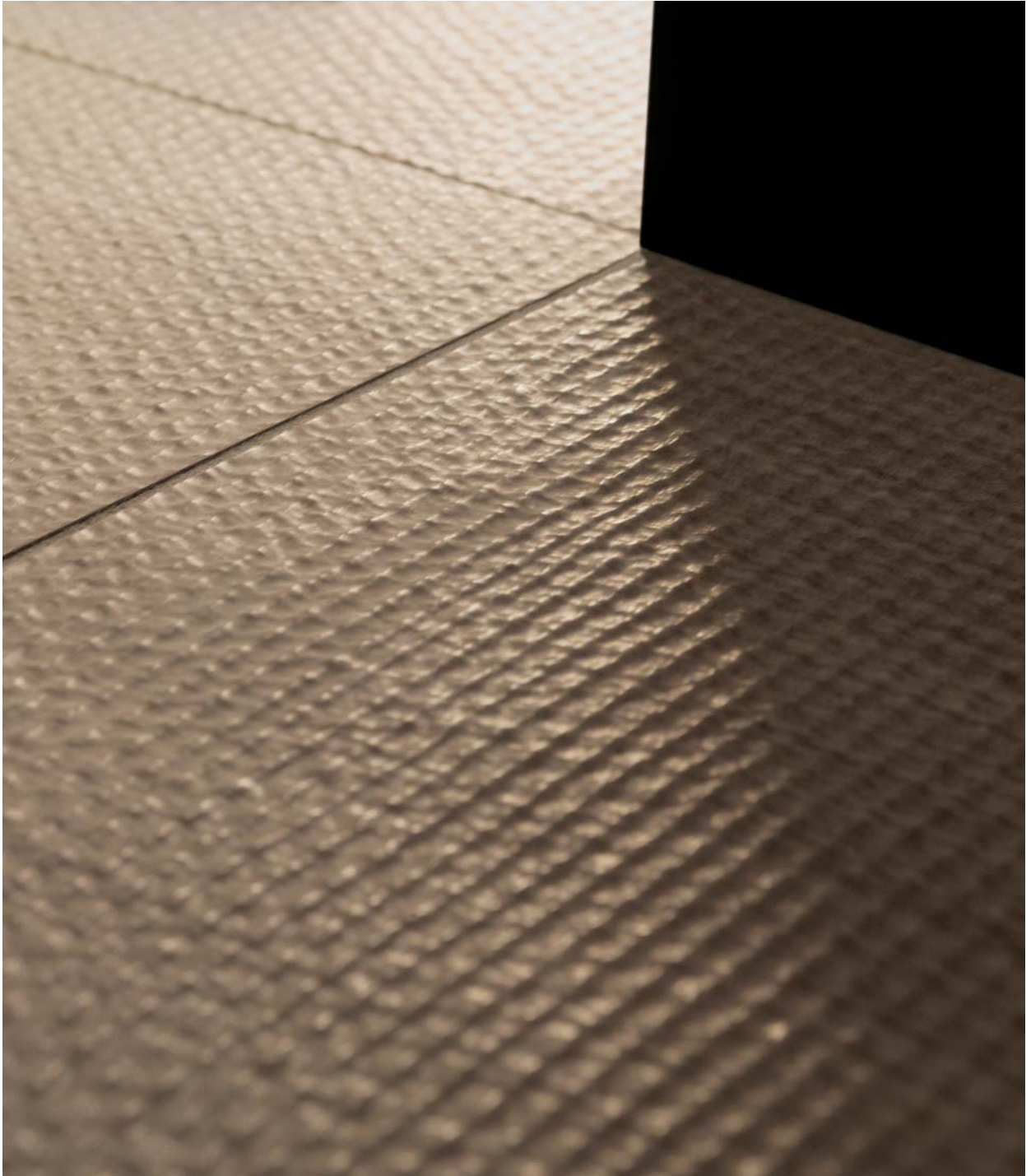
all tile sizes feature straight edges | tous les formats sont d'équerre
 alle Formate sind absolut rechtwinklig | todos los formatos son escuadrado

MA.DE

cocos café

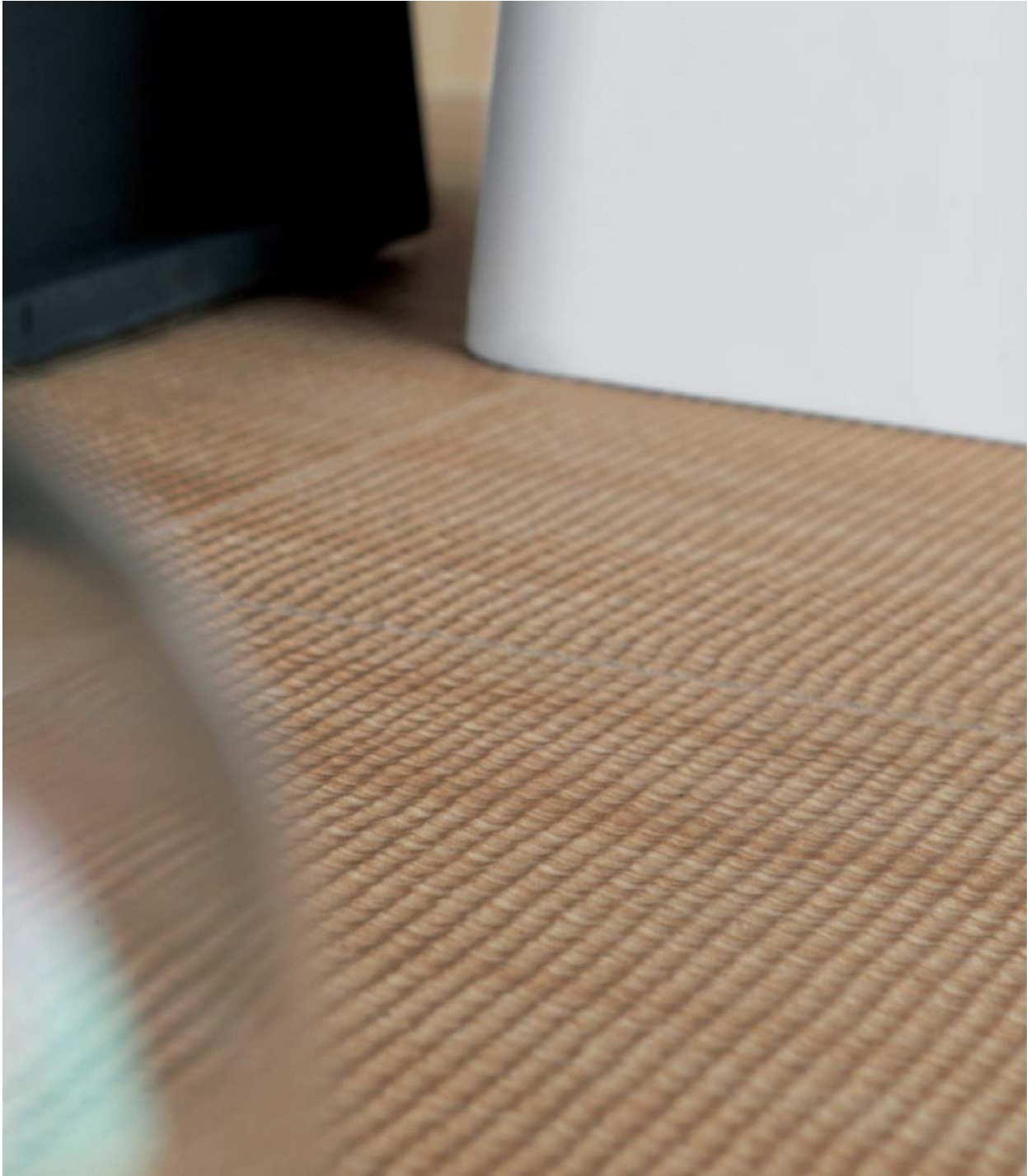


cocos tortora

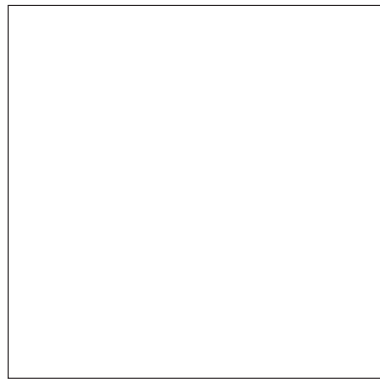


MA.DE

cocos beige



formati | nominal sizes | formats | formate | formatos



60x60 | 24"x24"



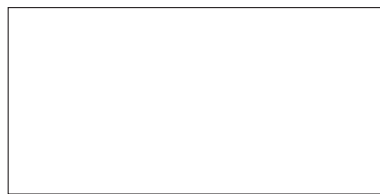
- 866004** . cocos beige . Pei IV - GLA R10
- 866005** . cocos tortora . Pei IV - GLA R10
- 866006** . cocos caffè . Pei IV - GLA R10



1,5x60



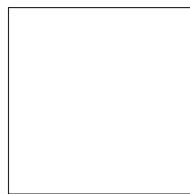
- 861504** . list. cocos beige
- 861505** . list. cocos tortora
- 861506** . list. cocos caffè



60x30 | 24"x12"



- 863004** . cocos beige . Pei IV - GLA R10
- 863005** . cocos tortora . Pei IV - GLA R10
- 863006** . cocos caffè . Pei IV - GLA R10



30x30 | 12"x12"



- 860004** . cocos beige . Pei IV - GLA R10
- 860005** . cocos tortora . Pei IV - GLA R10
- 860006** . cocos caffè . Pei IV - GLA R10

tutti i formati sono squadri

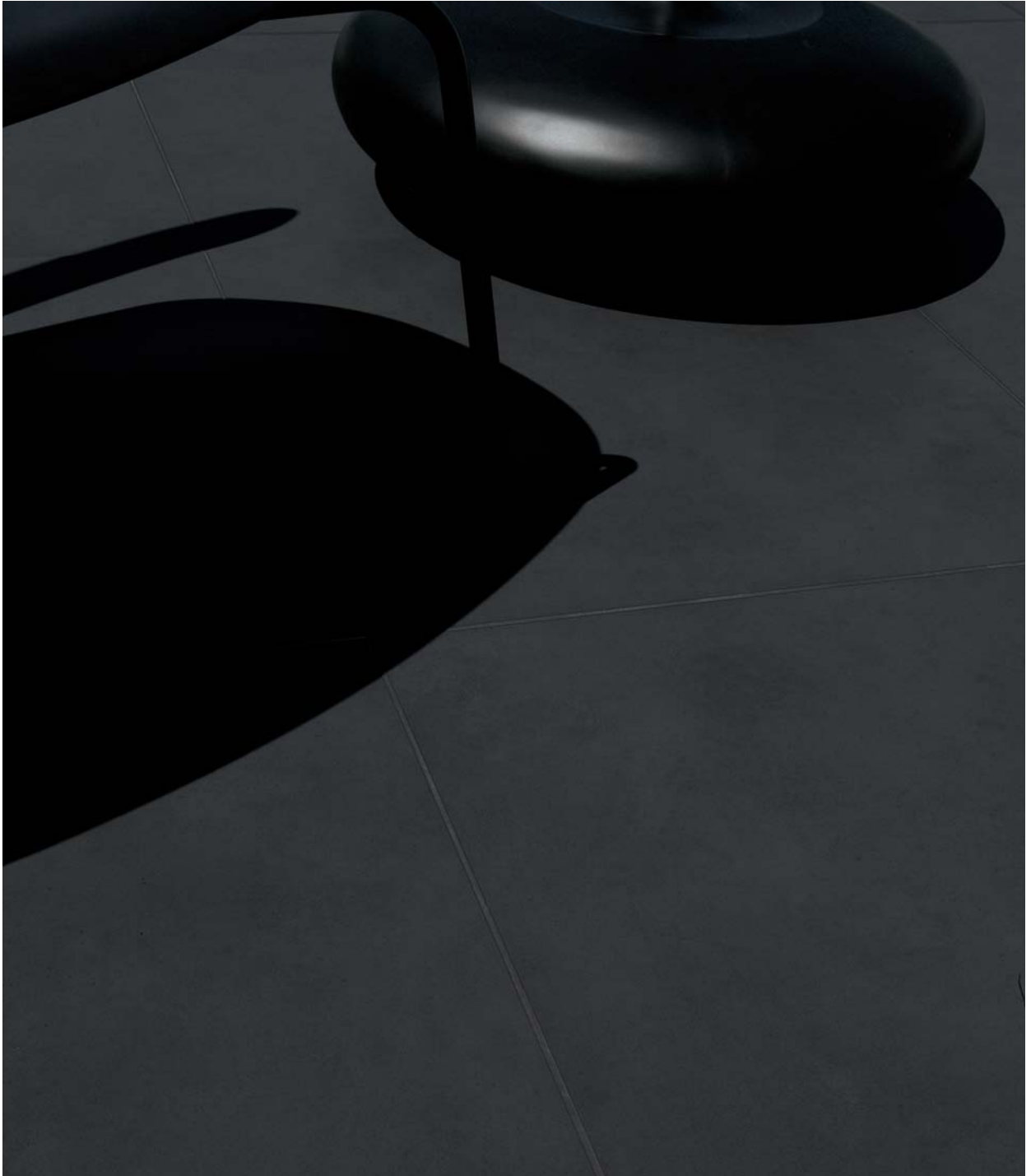
all tile sizes feature straight edges | tous les formats sont d'équerre
alle Formate sind absolut rechtwinklig | todos los formatos son escuadrado

MA.DE

uni bianco



uni nero

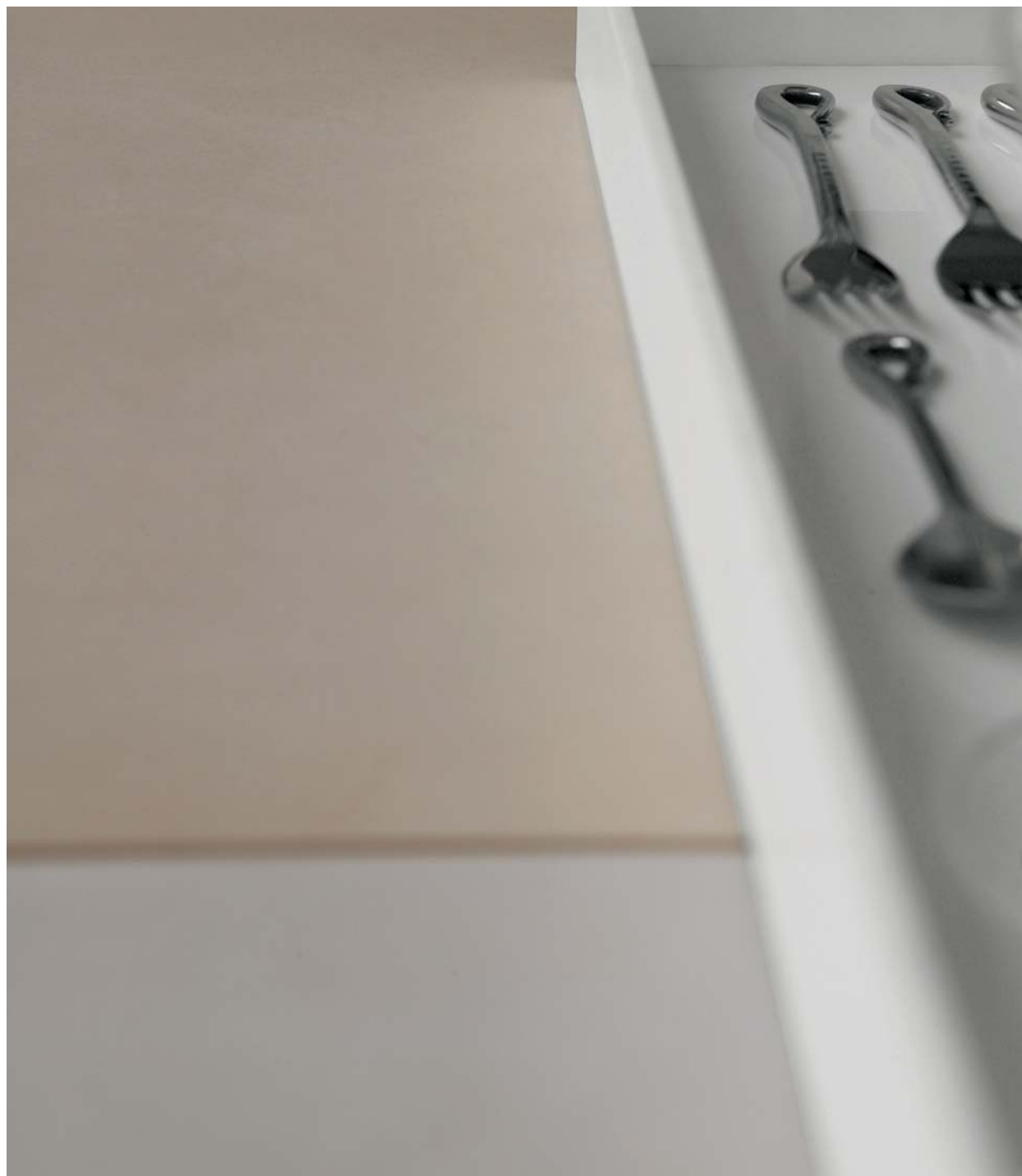


MA.DE

uni grigio



uni tortora



MA.DE

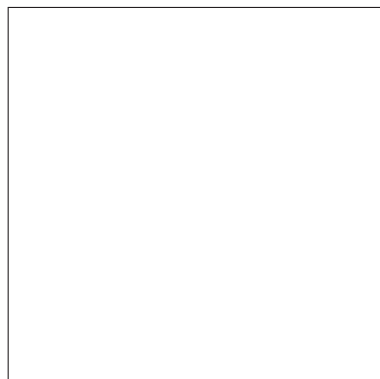
uni beige



uni metal



formati | nominal sizes | formats | formate | formatos



60x60 | 24"x24"



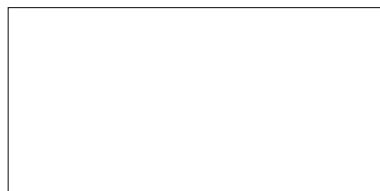
- 866007 . uni metal . Pei IV - GLA 
- 866008 . uni bianco . Pei V - GLA
- 866009 . uni beige . Pei V - GLA
- 866010 . uni tortora . Pei IV - GLA
- 866011 . uni grigio . Pei IV - GLA
- 866012 . uni nero . Pei III - GLA



1,5x60



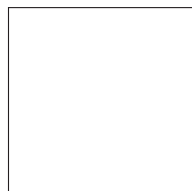
- 861507 . list. uni metal
- 861508 . list. uni bianco
- 861509 . list. uni beige
- 861510 . list. uni tortora
- 861511 . list. uni grigio
- 861512 . list. uni nero



60x30 | 24"x12"



- 863007 . uni metal . Pei IV - GLA 
- 863008 . uni bianco . Pei V - GLA
- 863009 . uni beige . Pei V - GLA
- 863010 . uni tortora . Pei IV - GLA
- 863011 . uni grigio . Pei IV - GLA
- 863012 . uni nero . Pei III - GLA



30x30 | 12"x12"

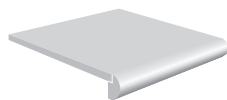


- 860007 . uni metal . Pei IV - GLA 
- 860008 . uni bianco . Pei V - GLA
- 860009 . uni beige . Pei V - GLA
- 860010 . uni tortora . Pei IV - GLA
- 860011 . uni grigio . Pei IV - GLA
- 860012 . uni nero . Pei III - GLA

tutti i formati sono quadrati

all tile sizes feature straight edges | tous les formats sont d'équerre
alle Formate sind absolut rechtwinklig | todos los formatos son escuadrado

pezzi speciali | trims | pièces spéciales | Formteile | piezas especiales



30x30






-  **864001** . scal. uni bianco
-  **864002** . scal. uni beige
-  **864003** . scal. uni tortora
-  **864004** . scal. uni grigio
-  **864005** . scal. uni nero



30x30








-  **864501** . ang. scal. uni bianco
-  **864502** . ang. scal. uni beige
-  **864503** . ang. scal. uni tortora
-  **864504** . ang. scal. uni grigio
-  **864505** . ang. scal. uni nero










9,8x40



-  **869001** . battiscopa. uni bianco
-  **869002** . battiscopa. uni beige
-  **869003** . battiscopa. uni tortora
-  **869004** . battiscopa. uni grigio
-  **869005** . battiscopa. uni nero

IMBALLI • PACKING • CONDITIONNEMENT • VERPACKUNGSEINHEITEN • EMBALAJES

	FORMATO SIZE FORMAT FORMAT FORMATO	SPESSORE THICKNESS EPAISSEUR STÄRKE ESPESOR	KG/MQ KG/SQ.M. KG/M2 KG/QM KG/M2	SCATOLA BOX BOÎTE KARTON CAJA		EUROPALLET	
	CM	MM		PZ.	MQ.	BOX	MQ.
	60 x 60 SQ.	10,5	24,20	4	1,44	24	34,56
	60 x 30 SQ.	10,5	24,20	5	0,90	40	36,00
	30 x 30 SQ.	10,5	24,20	9	0,81	48	38,88
	1,5 x 60 SQ.	10,5	24,20	6	0,054	-	-
	30 x 30 scal.	10,5	24,20	6	0,54	-	-
	30 x 30 ang. scal.	10,5	24,20	2	0,18	-	-
	9,8 x 40 battiscopa	9	20,25	20	0,78	80	63,04

SQ.: squadrato | squared | èquerrè | rechtwinklig | escuadrado

Iris Ceramica S.p.A.: tutti i diritti riservati

Ogni riproduzione totale o parziale dei contenuti del presente catalogo, sia di testo che di immagine, è vietata e sarà perseguita a termini di legge.

Iris Ceramica S.p.A.: all rights reserved

Total or partial reproduction of text or illustrations of this catalogue is prohibited and is subject to legal sanctions.

Iris Ceramica S.p.A.: tous droits réservés

Toute reproduction totale ou partielle du contenu - textes et images - du présent catalogue est interdite et constituerait une contrefaçon sanctionnée par la loi.

Iris Ceramica S.p.A.: alle Rechte vorbehalten

Der vollständige oder auszugsweise Nachdruck des Inhalts dieses Katalog in Schrift und Bild ist verboten und wird nach Maßgabe des Gesetzes geahndet.

Iris Ceramica S.p.A.: reservados todos los derechos

La reproducción total o parcial del contenido, tanto de texto como de imagen, de este catálogo queda prohibida y será perseguida de acuerdo con la ley.

THANKS TO:
Bosa
Coperte Society
Crassevig
Kenzo Ki
Emilia Palomba
Zanotta
Zucchetti

PHOTO:
Max Zambelli

CONCEPT: (HI)

PROGETTO GRAFICO:
Studiadiade.com

STAMPA:
Grafiche dell'Artiere



